

# C10orf58 antibody



Catalog Number: 108565

## Product name

C10orf58 antibody

## Immunogen

[Human C10orf58 Recombinant protein \(GST tag & His tag\)](#)

## Specificity

Human, Rat; other species not tested.

## Antibody description

C10orf58 Rabbit Polyclonal antibody. Positive WB detected in ROS1728 cells. Positive IF detected in ROS1728 cells. Observed molecular weight by Western-blot: 24-30 kDa

## Preparation

This antibody was obtained by immunization of C10orf58 recombinant protein (Accession Number: NM\_001243779). Purification method: Antigen affinity purified.

## Formulation

PBS with 0.1% sodium azide and 50% glycerol pH 7.3.

## Storage

Store at -20°C. DO NOT ALIQUOT

## Clonality

Polyclonal

## Ig Type

Rabbit IgG

## Applications

ELISA, WB, IF

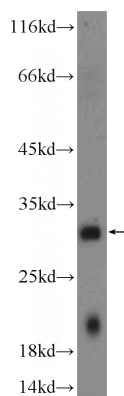
## Dilutions

Recommended Dilution:

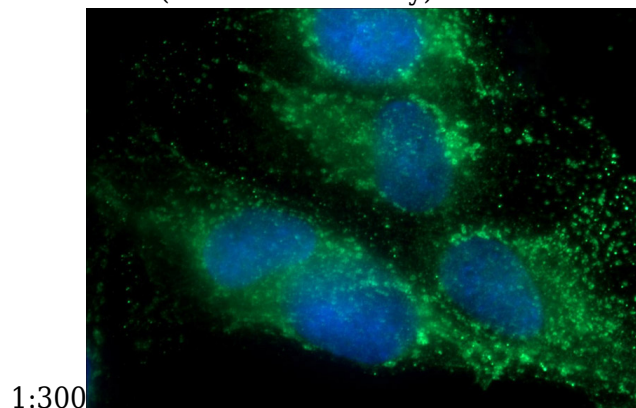
WB: 1:200-1:1000

IF: 1:20-1:200

## Validations



ROS1728 cells were subjected to SDS PAGE followed by western blot with Catalog No:108565(C10orf58 Antibody) at dilution of



Immunofluorescent analysis of ROS1728 cells using Catalog No:108565(C10orf58 Antibody) at dilution of 1:50 and Alexa Fluor 488-conjugated AffiniPure Goat Anti-Rabbit IgG(H+L)