

# ARPC2 antibody



Catalog Number: 108165

## Product name

ARPC2 antibody

## Immunogen

[Human ARPC2 Recombinant protein \(GST tag & His tag\)](#)

## Specificity

Human, Mouse, Rat; other species not tested.

## Antibody description

ARPC2 Rabbit Polyclonal antibody. Positive IHC detected in human breast cancer tissue. Positive IF detected in Hela cells. Positive WB detected in MCF7 cells, 3T3-L1 cells, HeLa cells, mouse skeletal muscle tissue, NIH/3T3 cells, PC-3 cells. Observed molecular weight by Western-blot: 34 kDa

## Preparation

This antibody was obtained by immunization of ARPC2 recombinant protein (Accession Number: NM\_005731). Purification method: Antigen affinity purified.

## Formulation

PBS with 0.02% sodium azide and 50% glycerol pH 7.3.

## Storage

Store at -20°C. DO NOT ALIQUOT

## Clonality

Polyclonal

## Ig Type

Rabbit IgG

## Applications

ELISA, WB, IHC, IF

## Dilutions

Recommended Dilution:

WB: 1:500-1:5000

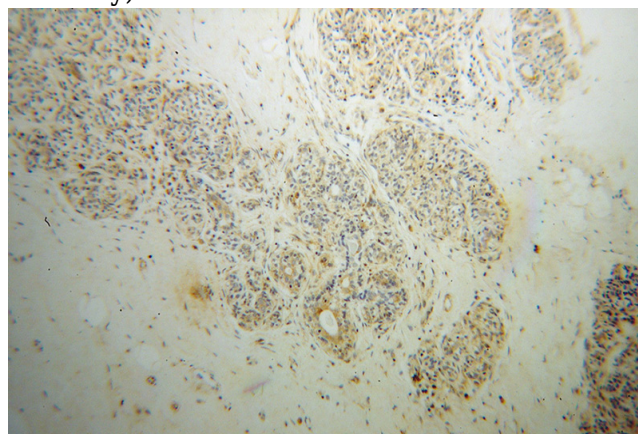
IHC: 1:20-1:200

IF: 1:10-1:100

## Validations



MCF7 cells were subjected to SDS PAGE followed by western blot with Catalog No:108165(ARPC2 antibody) at dilution of 1:400

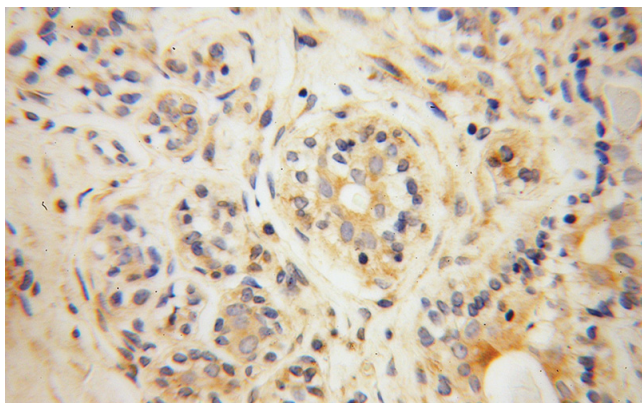


Immunohistochemical of paraffin-embedded human breast cancer using Catalog No:108165(ARPC2 antibody) at dilution of 1:100 (under 10x lens)

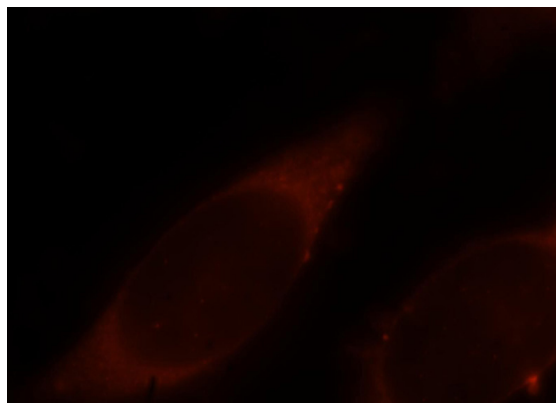
# ARPC2 antibody

Catalog Number: 108165

---



Immunohistochemical of paraffin-embedded human breast cancer using Catalog No:108165(ARPC2 antibody) at dilution of 1:100 (under 40x lens)



Immunofluorescent analysis of HeLa cells, using ARPC2 antibody Catalog No:108165 at 1:25 dilution and Rhodamine-labeled goat anti-rabbit IgG (red).