

# Clusterin antibody



Catalog Number: 107165

## Product name

Clusterin antibody

WB: 1:500-1:5000

IHC: 1:20-1:200

## Specificity

Human; other species not tested.

## Antibody description

Clusterin Mouse Monoclonal antibody. Positive WB detected in Human Blood. Positive IHC detected in human liver tissue, human breast cancer tissue, human prostate cancer tissue. Observed molecular weight by Western-blot: 36kDa

## Preparation

This antibody was obtained by immunization of Clusterin recombinant protein (Accession Number: NM\_001831). Purification method: Protein G purified.

## Formulation

PBS with 0.02% sodium azide and 50% glycerol pH 7.3.

## Storage

Store at -20°C. DO NOT ALIQUOT

## Clonality

Monoclonal

## Ig Type

Mouse IgG1

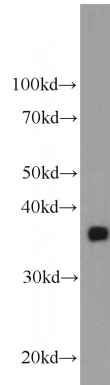
## Applications

ELISA, WB, IHC

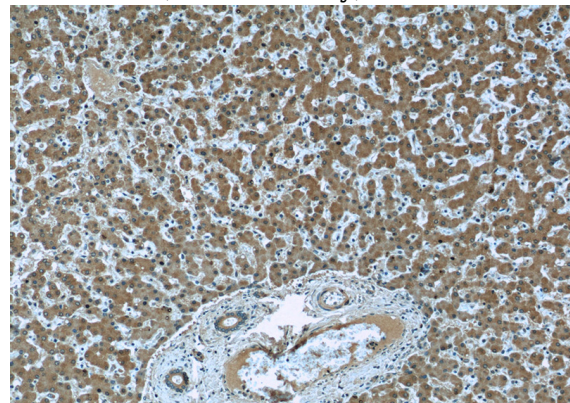
## Dilutions

Recommended Dilution:

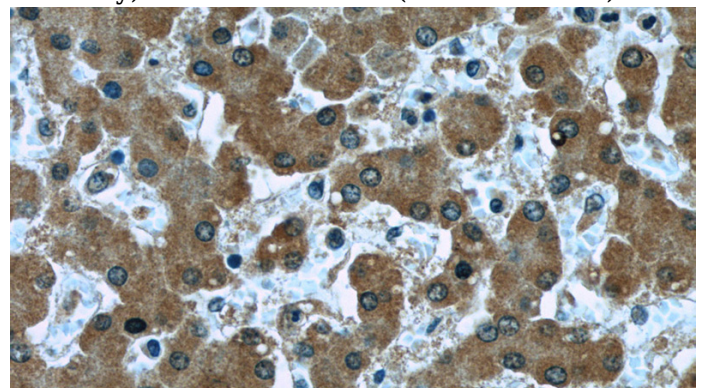
## Validations



human blood tissue were subjected to SDS PAGE followed by western blot with Catalog No:107165(CLU antibody) at dilution of 1:1000



Immunohistochemistry of paraffin-embedded human liver slide using Catalog No:107165(CLU Antibody) at dilution of 1:50 (under 10x lens)



Immunohistochemistry of paraffin-embedded human liver slide using Catalog No:107165(CLU Antibody) at dilution of 1:50 (under 40x lens)