

Anti-Cyclin B1 Rabbit antibody



Catalog Number: 167165

Product name

Anti-Cyclin B1 Rabbit antibody

Specificity

Human

Antibody description

Cyclin B1 Rabbit polyclonal antibody

Preparation

Antigen: A synthetic peptide of human Cyclin B1

Formulation

Supplied in 50nM Tris-Glycine(pH 7.4), 0.15M NaCl, 40%Glycerol, 0.01% sodium azide and 0.05% BSA.

Storage

Store at -20°C. Stable for 12 months from date of receipt.

Clonality

Polyclonal

Ig Type

Rabbit IgG

Applications

WB, ICC/IF, FC, IP

Dilutions

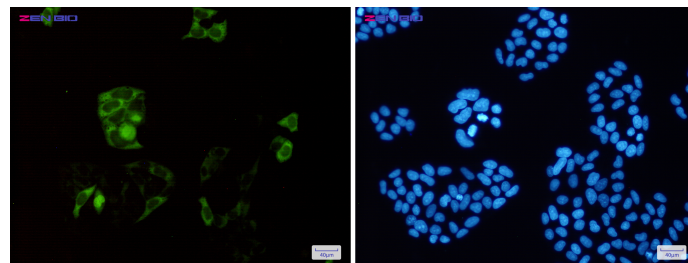
WB: 1/2000

ICC/IF: 1/20

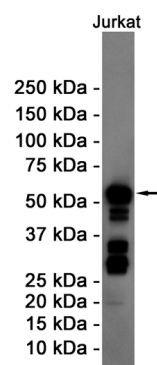
FC: 1/20

IP: 1/20

Validations

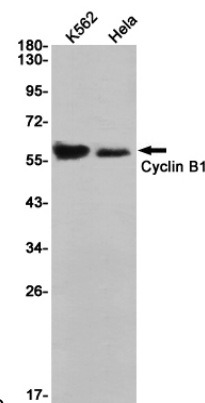


Immunocytochemistry of Cyclin B1(green) in HeLa cells using Cyclin B1 Rabbit pAb at dilution 1/50, and DAPI(blue)



and DAPI(blue)

Western blot detection of Cyclin B1 in Jurkat cell lysates using Cyclin B1 Rabbit pAb(1:1000 diluted). Predicted band size: 48KDa. Observed band size: 55KDa.



band size: 55KDa.

Western blot detection of Cyclin B1 in K562, HeLa cell lysates using Cyclin B1 Rabbit pAb(1:1000 diluted). Predicted band size: 48KDa. Observed band size: 55KDa.