

PRAME antibody

Catalog Number: 114165

Product name

PRAME antibody

Specificity

Human; other species not tested.

Antibody description

PRAME Rabbit Polyclonal antibody. Positive IP detected in A549 cells. Positive WB detected in A549 cells, HepG2 cells. Observed molecular weight by Western-blot: 58 kDa

Preparation

This antibody was obtained by immunization of PRAME recombinant protein (Accession Number: NM_001291716). Purification method: Antigen affinity purified.

Formulation

PBS with 0.1% sodium azide and 50% glycerol pH 7.3.

Storage

Store at -20°C. DO NOT ALIQUOT

Clonality

Polyclonal

Ig Type

Rabbit IgG

Applications

ELISA, WB, IP

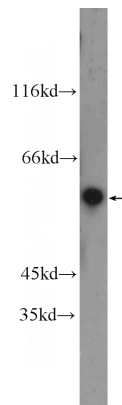
Dilutions

Recommended Dilution:

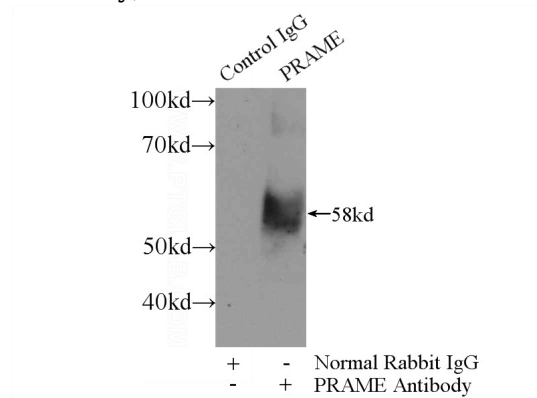
WB: 1:200-1:1000

IP: 1:200-1:1000

Validations



A549 cells were subjected to SDS PAGE followed by western blot with Catalog No:114165(PRAME Antibody) at dilution of 1:300



IP Result of anti-PRAME (IP:Catalog No:114165, 3ug; Detection:Catalog No:114165 1:300) with A549 cells lysate 2400ug.