

Anti-EPHB2 antibody



Catalog Number: 105865

Product name

Anti-EPHB2 antibody

Immunogen

[Human EphB2/Eph Receptor B2 \(His Tag\) recombinant protein](#)

Specificity

Human EPHB2 / Hek5

Antibody description

Rabbit Monoclonal to Human EPHB2

Preparation

This antibody was obtained from a rabbit immunized with purified, recombinant Human EPHB2 / Hek5 (rh EPHB2 / Hek5; NP_059145.2; Met1-Leu543) and conjugated with PE under optimum conditions, the unreacted PE was removed.

Formulation

Aqueous solution containing 0.5% BSA and 0.09% sodium azide

Storage

This antibody is stable for 12 months from date of receipt when stored at 2°C-8°C. Protected from prolonged exposure to light. Do not freeze ! Sodium azide is toxic to cells and should be

disposed of properly. Flush with large volumes of water during disposal.

Clonality

Monoclonal

Ig Type

Rabbit IgG

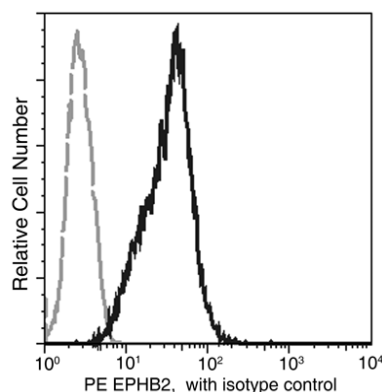
Applications

FCM

Dilutions

FCM

Validations



EPHB2 / Hek5 Antibody (PE), Rabbit MAb, Flow cytometric

Flow cytometric analysis of Human EPHB2 expression in CoLo205 cells.