

# ERG antibody



Catalog Number: 110355

## Product name

ERG antibody

WB: 1:200-1:2000

IP: 1:200-1:2000

## Specificity

Human, Mouse, Rat; other species not tested.

IHC: 1:10-1:100

## Antibody description

ERG Rabbit Polyclonal antibody. Positive IHC detected in human spleen tissue, human brain tissue, human kidney tissue, human lung tissue, human ovary tissue, human testis tissue. Positive WB detected in MCF-7 cells, HEK-293 cells. Positive IP detected in MCF-7 cells. Observed molecular weight by Western-blot: 55 kDa

## Preparation

This antibody was obtained by immunization of ERG recombinant protein (Accession Number: NM\_182918). Purification method: Antigen affinity purified.

## Formulation

PBS with 0.02% sodium azide and 50% glycerol pH 7.3.

## Storage

Store at -20°C. DO NOT ALIQUOT

## Clonality

Polyclonal

## Ig Type

Rabbit IgG

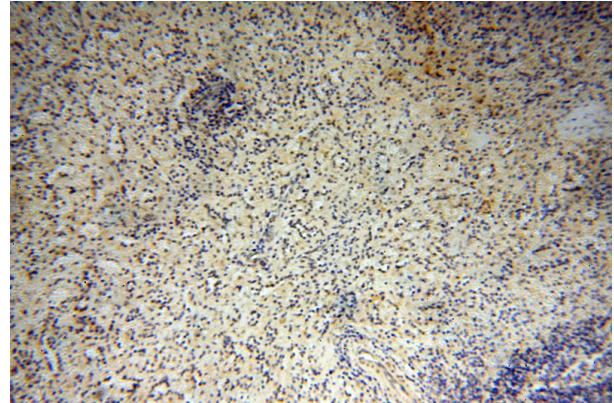
## Applications

ELISA, IHC, WB, IP

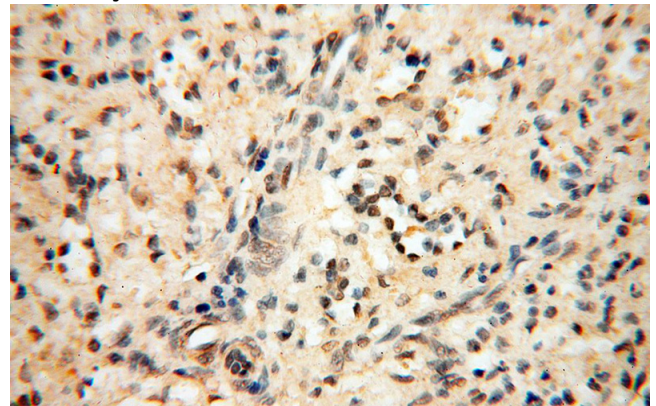
## Dilutions

Recommended Dilution:

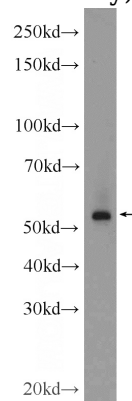
## Validations



Immunohistochemical of paraffin-embedded human spleen using Catalog No:110355(ERG antibody) at dilution of 1:25 (under 10x lens)



Immunohistochemical of paraffin-embedded human spleen using Catalog No:110355(ERG antibody) at dilution of 1:25 (under 40x lens)



# ERG antibody

Catalog Number: 110355

MCF-7 cells were subjected to SDS PAGE followed by western blot with Catalog No:110355(ERG Antibody) at dilution of 1:600

IP Result of anti-ERG (IP:Catalog No:110355, 4ug; Detection:Catalog No:110355 1:500) with MCF-7 cells lysate 800ug.

