

Product name

ITPA antibody

Recommended Dilution:

WB: 1:500-1:5000

Specificity

Human, Mouse, Rat; other species not tested.

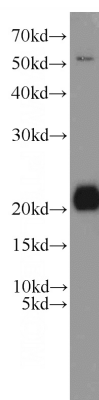
IP: 1:500-1:5000

IHC: 1:20-1:200

Antibody description

ITPA Rabbit Polyclonal antibody. Positive IF detected in MCF-7 cells. Positive IHC detected in human heart tissue, human lung cancer tissue. Positive IP detected in mouse liver tissue. Positive WB detected in K-562 cells, HeLa cells, HT-1080 cells, human liver tissue, mouse heart tissue, mouse liver tissue, NIH/3T3 cells, rat liver tissue. Observed molecular weight by Western-blot: 22 kDa

IF: 1:10-1:100

Validations**Preparation**

This antibody was obtained by immunization of ITPA recombinant protein (Accession Number: NM_033453). Purification method: Antigen affinity purified.

K-562 cells were subjected to SDS PAGE followed by western blot with Catalog No:111955(ITPA antibody) at dilution of 1:1000

Formulation

PBS with 0.02% sodium azide and 50% glycerol pH 7.3.

Storage

Store at -20°C. DO NOT ALIQUOT

Clonality

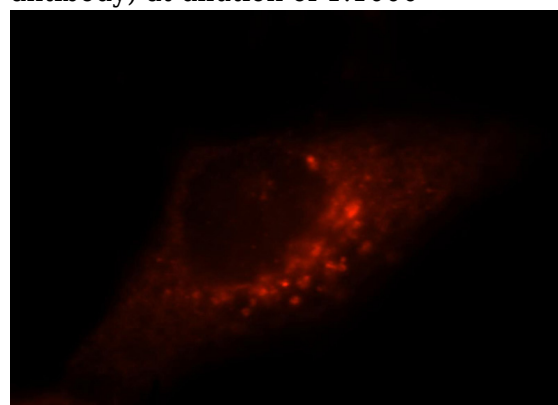
Polyclonal

Ig Type

Rabbit IgG

Applications

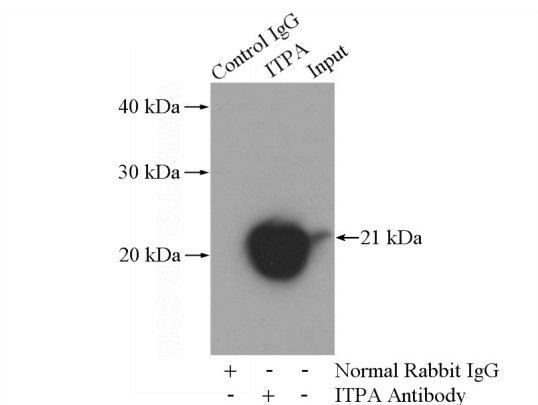
ELISA, WB, IF, IHC, IP

Dilutions

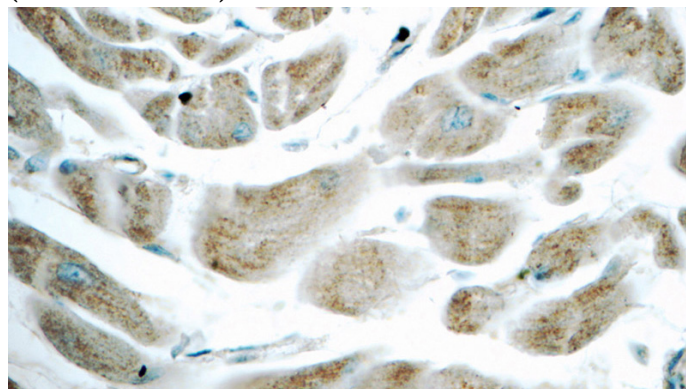
Immunofluorescent analysis of MCF-7 cells, using ITPA antibody Catalog No:109111 at 1:25 dilution and Rhodamine-labeled goat anti-rabbit IgG (red).

ITPA antibody

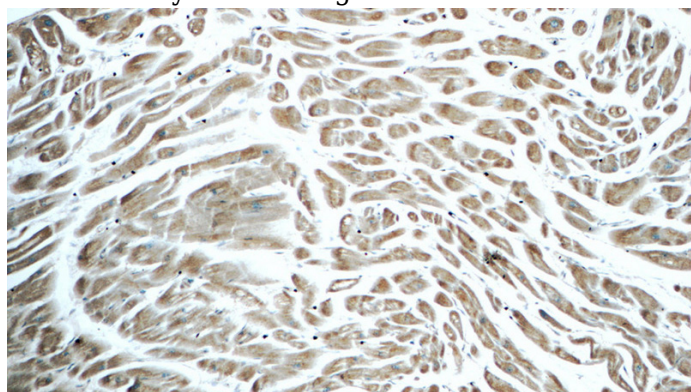
Catalog Number: 111955



Immunohistochemistry of paraffin-embedded human heart tissue slide using Catalog No:111955(ITPA Antibody) at dilution of 1:50 (under 10x lens)



Immunohistochemistry of paraffin-embedded human heart tissue slide using Catalog No:111955(ITPA Antibody) at dilution of 1:50 (under 40x lens)



IP Result of anti-ITPA (IP:Catalog No:111955, 4ug; Detection:Catalog No:111955 1:1000) with mouse liver tissue lysate 4000ug.