

HPS6 antibody



Catalog Number: 111455

Product name

HPS6 antibody

Immunogen

[Human HPS6 Recombinant protein \(GST tag & His tag\)](#)

Specificity

human, mouse, rat; other species not tested.

Antibody description

HPS6 Rabbit Polyclonal antibody. Positive IHC detected in human ovary tumor. Positive WB detected in HeLa cells, HEK-293 cells, MCF7 cells. Observed molecular weight by Western-blot: 83kd

Preparation

This antibody was obtained by immunization of HPS6 recombinant protein (Accession Number: NM_024747). Purification method: Antigen affinity purified.

Formulation

PBS with 0.1% sodium azide and 50% glycerol pH 7.3.

Storage

Store at -20°C. DO NOT ALIQUOT

Clonality

Polyclonal

Ig Type

Rabbit IgG

Applications

ELISA, WB, IHC

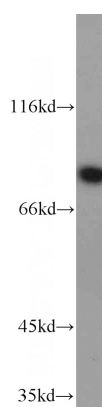
Dilutions

Recommended Dilution:

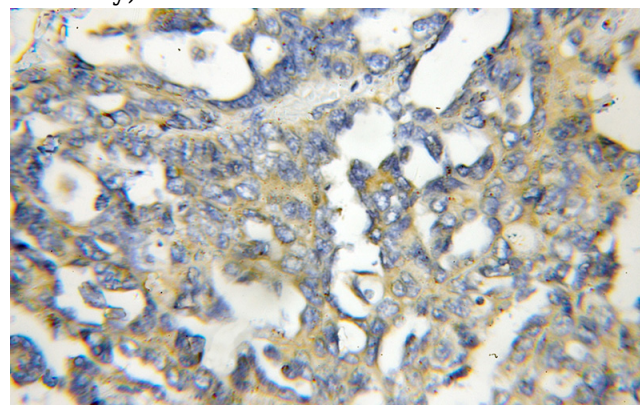
WB: 1:200-1:1000

IHC: 1:20-1:200

Validations



HeLa cells were subjected to SDS PAGE followed by western blot with Catalog No:111455(HPS6 antibody) at dilution of 1:300



Immunohistochemical of paraffin-embedded human ovary tumor using Catalog No:111455(HPS6 antibody) at dilution of 1:100 (under 10x lens)