

Anti-YAP1 Rabbit antibody



Catalog Number: 167055

Product name

Anti-YAP1 Rabbit antibody

WB: 1/2000-1/10000

IHC: 1/20-1/100

Specificity

Human

FC: 1/20

IP: 1/20

Antibody description

YAP1 Rabbit polyclonal antibody

Preparation

Antigen: A synthetic peptide of human YAP1

Formulation

Supplied in 50nM Tris-Glycine(pH 7.4), 0.15M NaCl, 40%Glycerol, 0.01% sodium azide and 0.05% BSA.

Storage

Store at -20°C. Stable for 12 months from date of receipt.

Clonality

Polyclonal

Ig Type

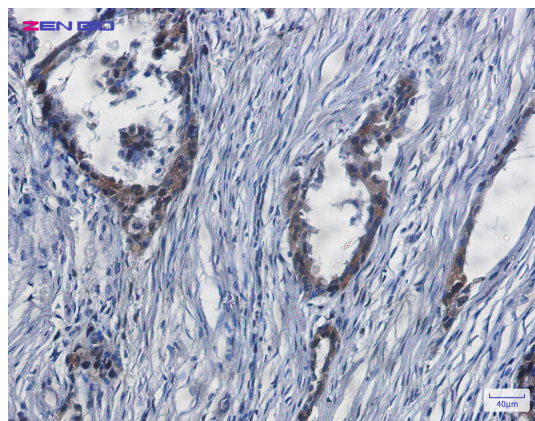
Rabbit IgG

Applications

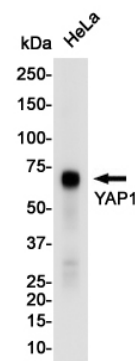
WB, IHC-P, FC, IP

Dilutions

Validations



Immunohistochemistry of YAP1 in paraffin-embedded Human lung cancer tissue using YAP1



Rabbit pAb at dilution 1/20

Western blot detection of YAP1 in HeLa cell lysates using YAP1 Rabbit pAb(1:1000 diluted). Predicted band size:55KDa.Observed band size:65KDa.