

Human AIMP1/EMAP II (His Tag) recombinant protein



Catalog Number: 501745

General Information

Gene Name Synonym

Multisynthase complex auxiliary component p43;
Endothelial monocyte-activating polypeptide 2;
Endothelial monocyte-activating polypeptide II;
Small inducible cytokine subfamily E member 1

Protein Construction

A DNA sequence encoding the native human SCYE1 (NP_004748.2) (Ala 2-Lys 312) was expressed, with a polyhistidine tag at the N-terminus.

Organism

Human

Expression Host

E. coli

QC Testing

Purity

> 97 % as determined by SDS-PAGE

Endotoxin

Please contact us for more information.

Stability

Samples are stable for up to twelve months from date of receipt at -70°C

Predicted N terminal

Met 1

Molecular Mass

The recombinant human SCYE1 consisting of 318 amino acids and migrates as an 35 kDa band in SDS-PAGE under reducing conditions as predicted.

Formulation

Lyophilized from sterile PBS, pH 7.4

1. 5 % trehalose and mannitol are added as protectants before lyophilization.
2. Please contact us for any concerns or special requirements.

Usage Guide

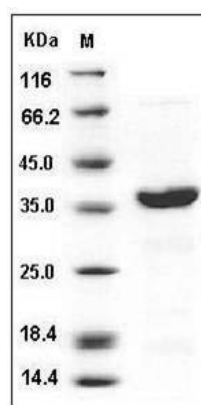
Storage

Store it under sterile conditions at -20°C to -80°C. It is recommended that the protein be aliquoted for optimal storage. Avoid repeated freeze-thaw cycles.

Reconstitution

Adding sterile water, prepare a stock solution of 0.25 mg/ml. Concentration is measured by UV-Vis.

SDS-PAGE



Human AIMP1 / EMAP2 / SCYE1 Protein (His Tag)
SDS-PAGE