

# Anti-CCDC51 antibody



Catalog Number: 176645

## Product name

Anti-CCDC51 antibody

## Specificity

Human

## Antibody description

Mouse monoclonal antibody to CCDC51

## Preparation

This antigen of this antibody was recombinant protein

## Formulation

Liquid, 1\*PBS (pH7.4), 0.2% BSA, 40% Glycerol.  
Preservative: 0.05% Sodium Azide.

## Storage

Store at +4°C after thawing. Aliquot store at -20°C or -80°C. Avoid repeated freeze / thaw cycles.

## Clonality

Monoclonal

## Ig Type

Mouse IgG1

## Applications

WB, IHC-P

## Dilutions

WB: 1:500-1:1,000

IHC-P: 1:50-1:200

## Validations

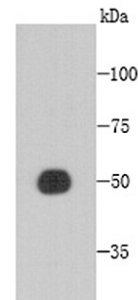


Fig1: Western blot analysis of CCDC51 on recombinant protein using anti-CCDC51 antibody at 1/1,000 dilution.

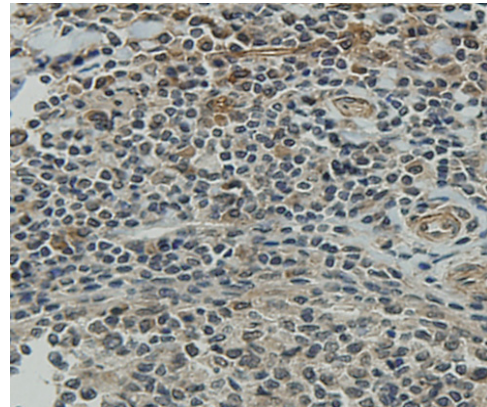


Fig2: Immunohistochemical analysis of paraffin-embedded human tonsil tissue using anti-CCDC51 antibody. Counter stained with hematoxylin

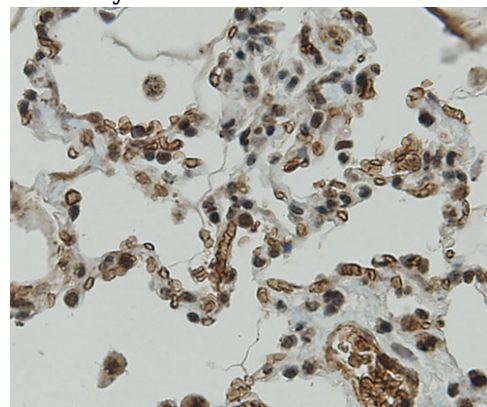


Fig3: Immunohistochemical analysis of paraffin-embedded human lung tissue using anti-CCDC51 antibody. Counter stained with hematoxylin.

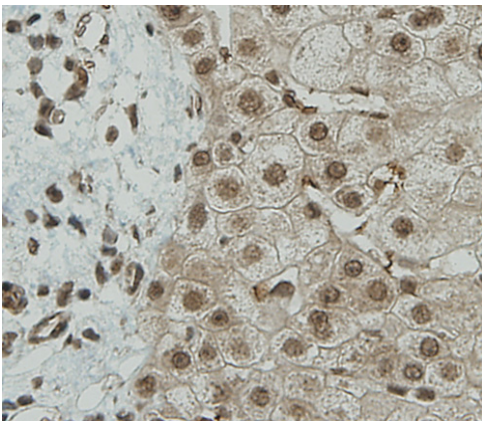


Fig4: Immunohistochemical analysis of paraffin-embedded human liver tissue using anti-CCDC51 antibody. Counter stained with hematoxylin.

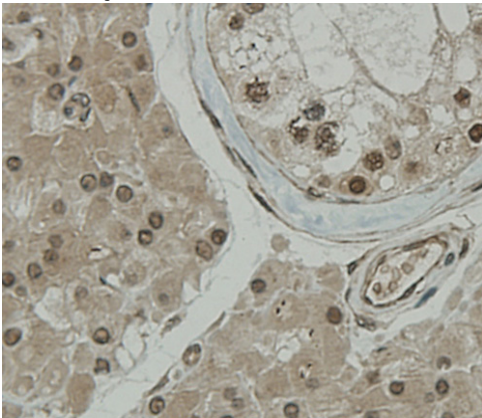


Fig5: Immunohistochemical analysis of paraffin-embedded human tonsil tissue using anti-CCDC51 antibody. Counter stained with hematoxylin.

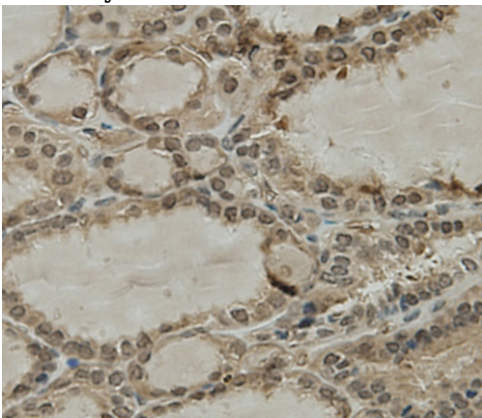
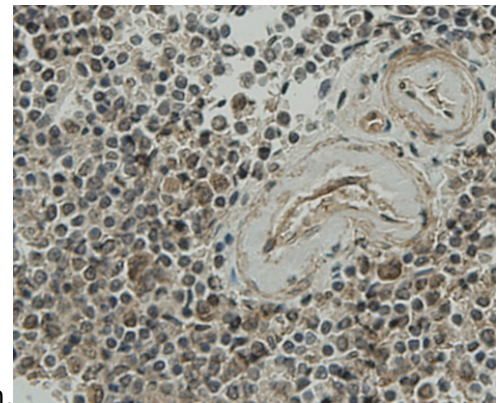
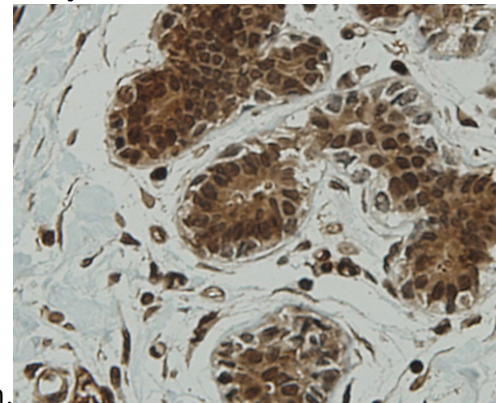


Fig6: Immunohistochemical analysis of paraffin-embedded human thyroid tissue using anti-CCDC51 antibody. Counter stained with hematoxylin.



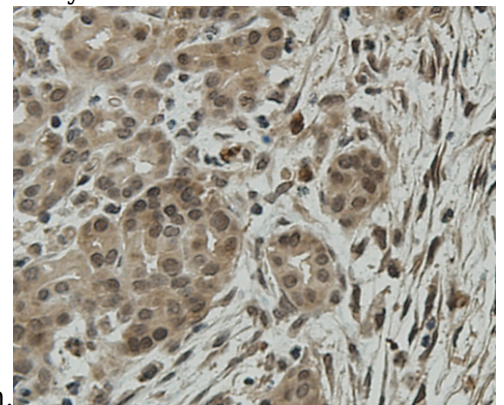
hematoxylin.

Fig7: Immunohistochemical analysis of paraffin-embedded human spleen tissue using anti-CCDC51 antibody. Counter stained with hematoxylin.



hematoxylin.

Fig8: Immunohistochemical analysis of paraffin-embedded human breast tissue using anti-CCDC51 antibody. Counter stained with hematoxylin.



hematoxylin.

Fig9: Immunohistochemical analysis of paraffin-embedded human pancreas tissue using anti-CCDC51 antibody. Counter stained with hematoxylin.