

RGS2 antibody



Catalog Number: 114645

Product name

RGS2 antibody

Immunogen

[Human RGS2 Recombinant protein \(GST tag & His tag\)](#)

Specificity

Human; other species not tested.

Antibody description

RGS2 Rabbit Polyclonal antibody. Positive WB detected in fetal human brain tissue, human brain tissue. Positive IHC detected in human pancreas cancer tissue. Observed molecular weight by Western-blot: 30-32 kDa

Preparation

This antibody was obtained by immunization of RGS2 recombinant protein (Accession Number: NM_002923). Purification method: Antigen affinity purified.

Formulation

PBS with 0.1% sodium azide and 50% glycerol pH 7.3.

Storage

Store at -20°C. DO NOT ALIQUOT

Clonality

Polyclonal

Ig Type

Rabbit IgG

Applications

ELISA, IHC, WB

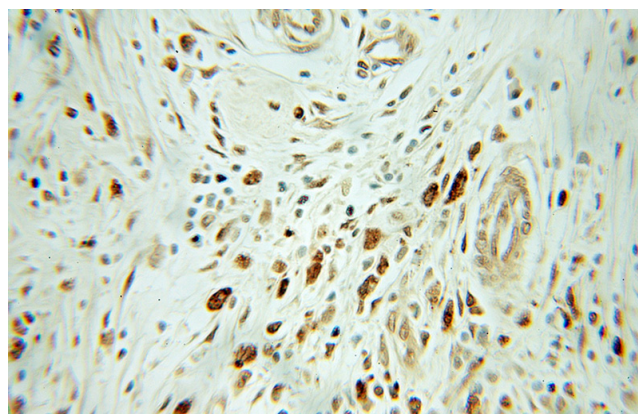
Dilutions

Recommended Dilution:

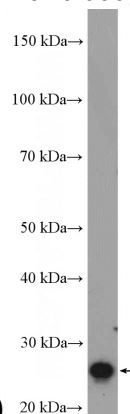
WB: 1:200-1:2000

IHC: 1:20-1:200

Validations



Immunohistochemical of paraffin-embedded human pancreas cancer using Catalog No:114645(RGS2 antibody) at dilution of 1:50



(under 10x lens)

fetal human brain tissue were subjected to SDS PAGE followed by western blot with Catalog No:114645(RGS2 Antibody) at dilution of 1:600