

ENAH antibody



Catalog Number: 110245

Product name

ENAH antibody

Immunogen

[Human ENAH Recombinant protein \(GST tag & His tag\)](#)

Specificity

Human; other species not tested.

Antibody description

ENAH Rabbit Polyclonal antibody. Positive WB detected in U-251 cells, MCF-7 cells. Positive IHC detected in human breast cancer tissue. Observed molecular weight by Western-blot: 85-88, 75-80 kDa

Preparation

This antibody was obtained by immunization of ENAH recombinant protein (Accession Number: NM_001008493). Purification method: Antigen affinity purified.

Formulation

PBS with 0.1% sodium azide and 50% glycerol pH 7.3.

Storage

Store at -20°C. DO NOT ALIQUOT

Clonality

Polyclonal

Ig Type

Rabbit IgG

Applications

ELISA, IHC, WB

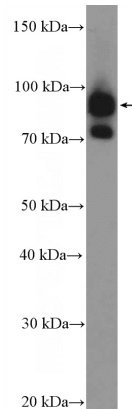
Dilutions

Recommended Dilution:

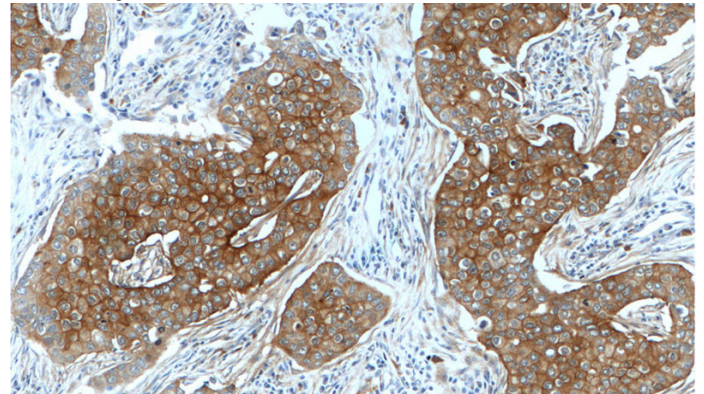
WB: 1:1000-1:10000

IHC: 1:20-1:200

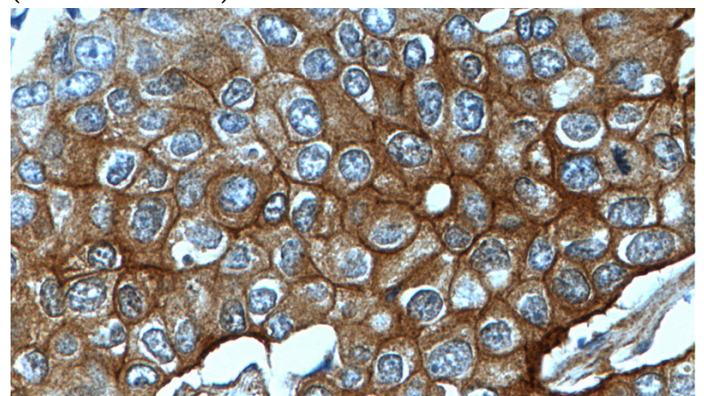
Validations



U-251 cells were subjected to SDS PAGE followed by western blot with Catalog No:110245(ENAH Antibody) at dilution of 1:2000



Immunohistochemistry of paraffin-embedded human breast cancer tissue slide using Catalog No:110245(ENAH Antibody) at dilution of 1:200 (under 10x lens).



ENAH antibody



Catalog Number: 110245

Immunohistochemistry of paraffin-embedded human breast cancer tissue slide using Catalog

No:110245(ENAH Antibody) at dilution of 1:200 (under 40x lens).