

Anti-phospho-Cdk1/2 (Thr14) Rabbit antibody



Catalog Number: 167845

Product name

Anti-phospho-Cdk1/2 (Thr14) Rabbit antibody

Ig Type

Rabbit IgG

Specificity

Human, Mouse, Rat

Applications

WB, IHC-P, IP

Antibody description

phospho-Cdk1/2 (Thr14) Rabbit monoclonal antibody

Dilutions

WB: 1/1000

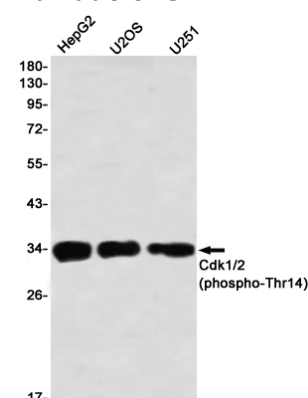
IHC: 1/50

IP: 1/20

Preparation

Antigen: A synthetic phosphopeptide corresponding to residues surrounding Thr14 of human Cdk1/2

Validations



Formulation

50nM Tris-Glycine(pH 7.4), 0.15M NaCl, 40%Glycerol, 0.01% sodium azide and 0.05% BSA

Storage

Store at 4°C short term. Store at -20°C long term. Avoid freeze / thaw cycle.

Clonality

Monoclonal

Western blot detection of Cdk1/2 (phospho-Thr14) in HepG2,U2OS,U251 using Cdk1/2 (phospho-Thr14) Rabbit mAb(1:1000 diluted)