

Anti-Phospho-eIF4E (Ser209) Rabbit antibody



Catalog Number: 167445

Product name

Anti-Phospho-eIF4E (Ser209) Rabbit antibody

Specificity

Human, Mouse, Rat

Antibody description

Phospho-eIF4E (Ser209) Rabbit polyclonal antibody

Preparation

Antigen: A synthetic phosphopeptide corresponding to residues surrounding Ser209 of human eIF4E

Formulation

Supplied in 50nM Tris-Glycine(pH 7.4), 0.15M NaCl, 40%Glycerol, 0.01% sodium azide and 0.05% BSA.

Storage

Store at -20°C. Stable for 12 months from date of receipt.

Clonality

Polyclonal

Ig Type

Rabbit IgG

Applications

WB, IHC-P, ICC/IF, IP

Dilutions

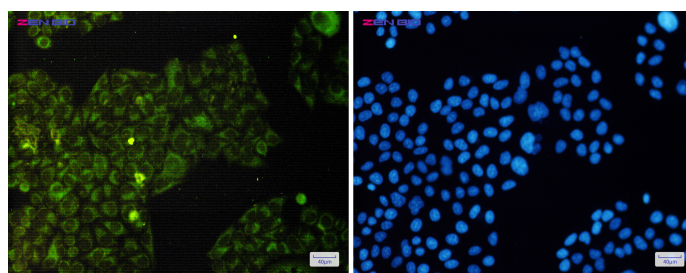
WB: 1/1000-1/10000

IHC: 1/50

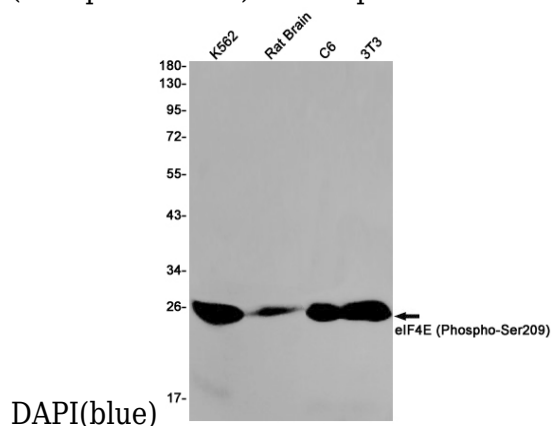
ICC/IF: 1/100

IP: 1/20

Validations



Immunocytochemistry of eIF4E (Phospho-Ser209)(green) in HeLa cells using eIF4E (Phospho-Ser209) Rabbit pAb at dilution 1/50, and



Western blot detection of eIF4E (Phospho-Ser209) in K562,Rat Brain,C6,3T3 cell lysates using eIF4E (Phospho-Ser209) Rabbit pAb(1:1000 diluted).Predicted band size:25kDa.Observed band size:25kDa.