

AQP1 antibody



Catalog Number: 108045

Product name

AQP1 antibody

Recommended Dilution:

WB: 1:500-1:5000

Specificity

Human, Mouse, Rat; other species not tested.

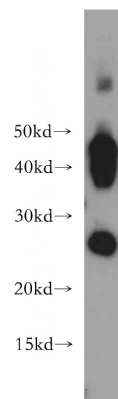
IP: 1:500-1:5000

IHC: 1:20-1:200

Antibody description

AQP1 Rabbit Polyclonal antibody. Positive WB detected in human skeletal muscle tissue, human heart tissue, human placenta tissue, mouse pancreas tissue, rat skeletal muscle tissue. Positive IP detected in mouse skeletal muscle tissue. Positive IHC detected in human kidney tissue, human breast cancer tissue. Observed molecular weight by Western-blot: 25-28 kDa, 40-45 kDa

Validations



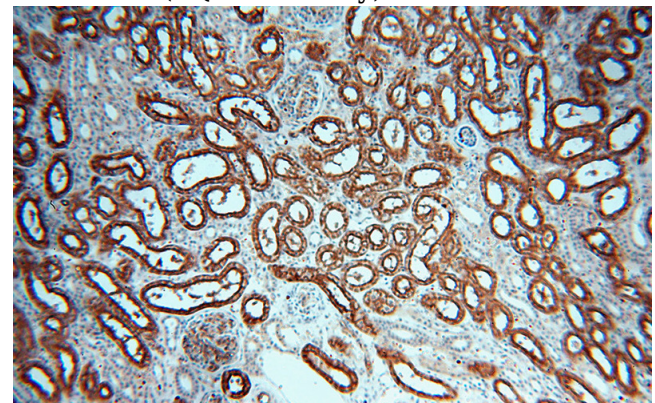
Preparation

This antibody was obtained by immunization of AQP1 recombinant protein (Accession Number: NM_000385). Purification method: Antigen affinity purified.

human skeletal muscle tissue were subjected to SDS PAGE followed by western blot with Catalog No:108045(AQP1 antibody) at dilution of 1:1000

Formulation

PBS with 0.02% sodium azide and 50% glycerol pH 7.3.



Storage

Store at -20°C. DO NOT ALIQUOT

Clonality

Polyclonal

Immunohistochemical of paraffin-embedded human kidney using Catalog No:108045(AQP1 antibody) at dilution of 1:100 (under 10x lens)

Ig Type

Rabbit IgG

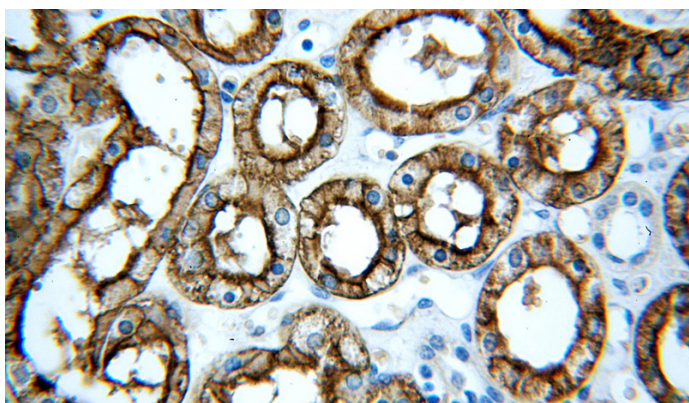
Applications

ELISA, WB, IHC, IP

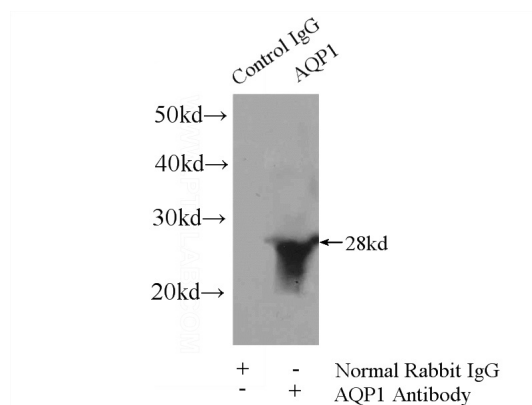
Dilutions

AQP1 antibody

Catalog Number: 108045



Immunohistochemical of paraffin-embedded human kidney using Catalog No:108045(AQP1 antibody) at dilution of 1:100 (under 40x lens)



IP Result of anti-AQP1 (IP:Catalog No:108045, 4ug; Detection:Catalog No:108045 1:1500) with mouse skeletal muscle tissue lysate 3600ug.