

SF3A3 antibody



Catalog Number: 115135

Product name

SF3A3 antibody

Immunogen

[Human SF3A3 Recombinant protein \(GST tag & His tag\)](#)

Specificity

Human, Mouse, Rat; other species not tested.

Antibody description

SF3A3 Rabbit Polyclonal antibody. Positive IHC detected in human lung cancer tissue. Positive IF detected in Hela cells. Positive IP detected in Raji cells. Positive WB detected in Raji cells. Observed molecular weight by Western-blot: 59kd

Preparation

This antibody was obtained by immunization of SF3A3 recombinant protein (Accession Number: NM_006802). Purification method: Antigen affinity purified.

Formulation

PBS with 0.1% sodium azide and 50% glycerol pH 7.3.

Storage

Store at -20°C. DO NOT ALIQUOT

Clonality

Polyclonal

Ig Type

Rabbit IgG

Applications

ELISA, WB, IHC, IF, IP

Dilutions

Recommended Dilution:

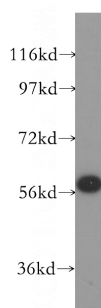
WB: 1:200-1:2000

IP: 1:200-1:2000

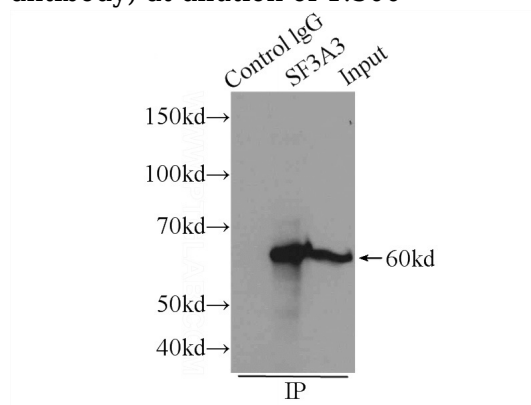
IHC: 1:20-1:200

IF: 1:10-1:100

Validations



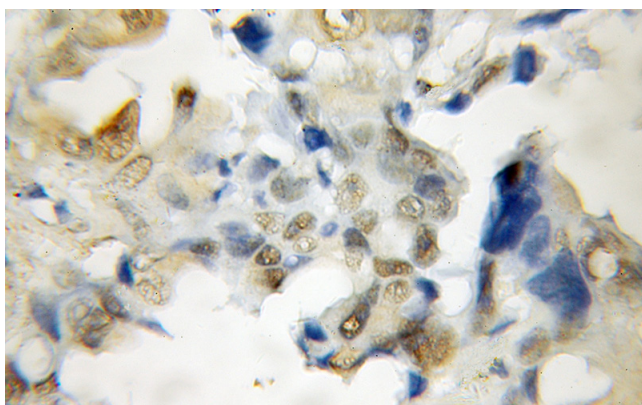
Raji cells were subjected to SDS PAGE followed by western blot with Catalog No:115135(SF3A3 antibody) at dilution of 1:300



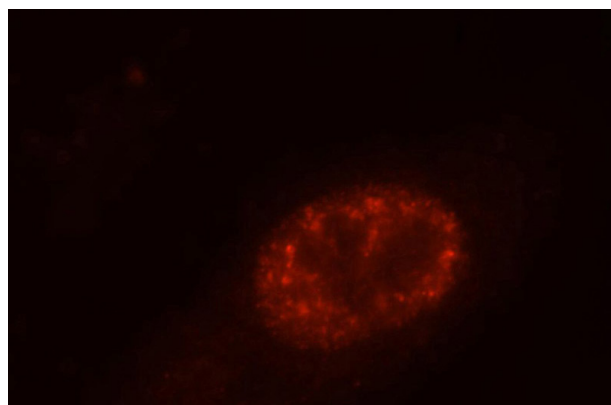
IP Result of anti-SF3A3 (IP:Catalog No:115135, 4ug; Detection:Catalog No:115135 1:600) with Raji cells lysate 2000ug.

SF3A3 antibody

Catalog Number: 115135



Immunohistochemical of paraffin-embedded human lung cancer using Catalog No:115135(SF3A3 antibody) at dilution of 1:50 (under 10x lens)



Immunofluorescent analysis of HeLa cells, using SF3A3 antibody Catalog No:115135 at 1:25 dilution and Rhodamine-labeled goat anti-rabbit IgG (red).