

# KRT80 antibody



Catalog Number: 112135

## Product name

KRT80 antibody

IHC: 1:20-1:200

## Specificity

human, mouse, rat; other species not tested.

## Antibody description

KRT80 Rabbit Polyclonal antibody. Positive WB detected in NIH/3T3 cells, A431 cells, human skeletal muscle tissue. Positive IHC detected in human testis. Observed molecular weight by Western-blot: 47kd,50kd

## Preparation

This antibody was obtained by immunization of KRT80 recombinant protein (Accession Number: NM\_001081492). Purification method: Antigen affinity purified.

## Formulation

PBS with 0.02% sodium azide and 50% glycerol pH 7.3.

## Storage

Store at -20°C. DO NOT ALIQUOT

## Clonality

Polyclonal

## Ig Type

Rabbit IgG

## Applications

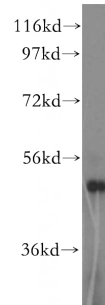
ELISA, WB, IHC

## Dilutions

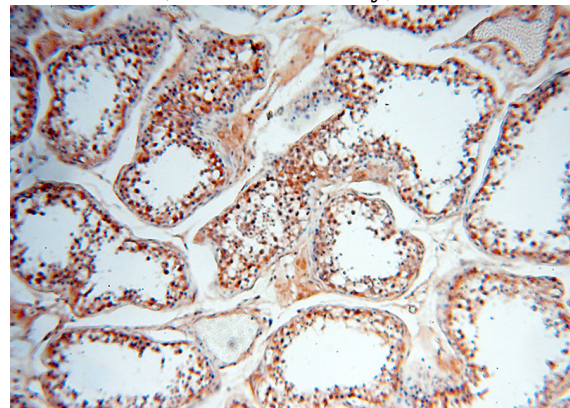
Recommended Dilution:

WB: 1:500-1:5000

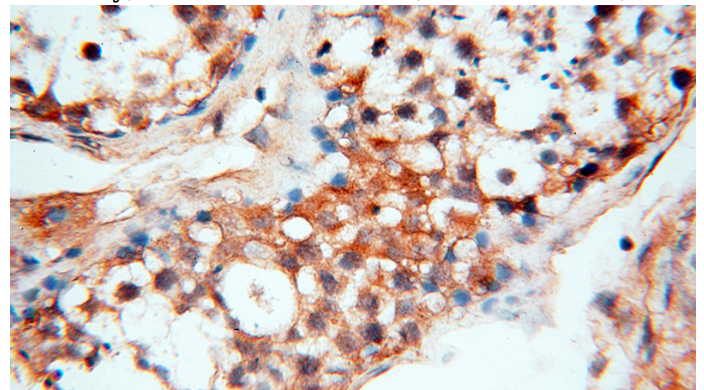
## Validations



NIH/3T3 cells were subjected to SDS PAGE followed by western blot with Catalog No:112135(KRT80 antibody) at dilution of 1:1500



Immunohistochemical of paraffin-embedded human testis using Catalog No:112135(KRT80 antibody) at dilution of 1:200 (under 10x lens)



Immunohistochemical of paraffin-embedded human testis using Catalog No:112135(KRT80 antibody) at dilution of 1:200 (under 40x lens)