

KGA-Specific antibody



Catalog Number: 112035

Product name

KGA-Specific antibody

Immunogen

[Human GLS Recombinant protein \(GST tag & His tag\)](#)

Specificity

Human, Mouse, Rat; other species not tested.

Antibody description

KGA-Specific Rabbit Polyclonal antibody. Positive WB detected in HEK-293 cells, human brain tissue, human heart tissue, K-562 cells, mouse brain tissue, mouse kidney tissue. Positive IP detected in HEK-293 cells. Positive IHC detected in human kidney tissue, human brain tissue. Observed molecular weight by Western-blot: 66 kDa

Preparation

This antibody was obtained by immunization of KGA-Specific recombinant protein (Accession Number: NM_014905). Purification method: Antigen affinity purified.

Formulation

PBS with 0.02% sodium azide and 50% glycerol pH 7.3.

Storage

Store at -20°C. DO NOT ALIQUOT

Clonality

Polyclonal

Ig Type

Rabbit IgG

Applications

ELISA, IHC, WB, IP

Dilutions

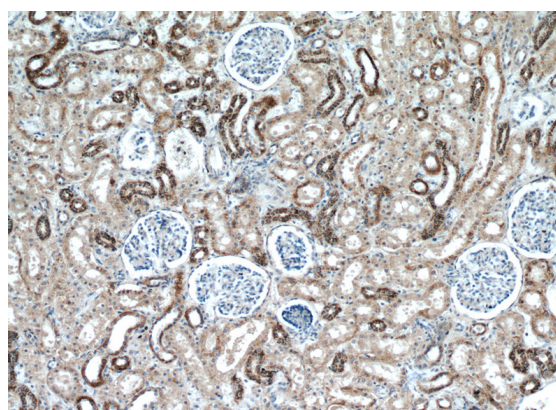
Recommended Dilution:

WB: 1:200-1:2000

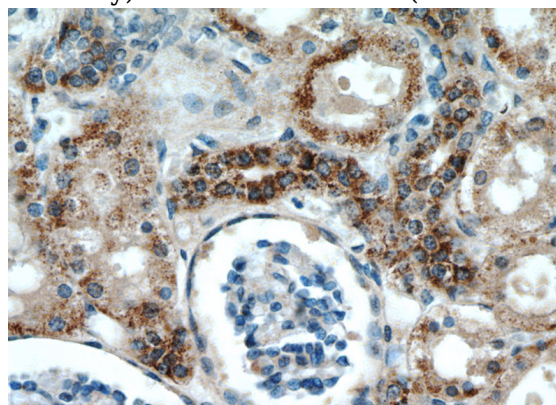
IP: 1:200-1:2000

IHC: 1:20-1:200

Validations



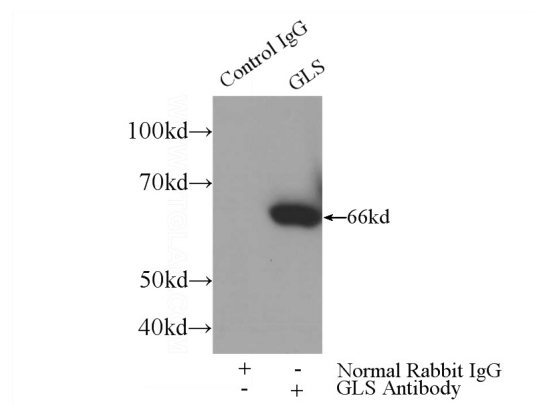
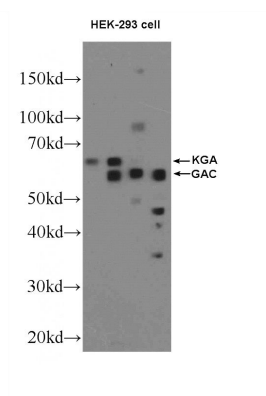
Immunohistochemical of paraffin-embedded human kidney using Catalog No:112035 (GLS antibody) at dilution of 1:100 (under 10x lens)



Immunohistochemical of paraffin-embedded human kidney using Catalog No:112035 (GLS antibody) at dilution of 1:100 (under 40x lens)

KGA-Specific antibody

Catalog Number: 112035



HEK-293 cells were subjected to SDS PAGE followed by western blot with Catalog No:112035(GLS Antibody) at dilution of 1:600

IP Result of anti-GLS (IP:Catalog No:112035, 3ug; Detection:Catalog No:112035 1:800) with HEK-293 cells lysate 3200ug.