

# RFC4 antibody



Catalog Number: 114625

## Product name

RFC4 antibody

Recommended Dilution:

WB: 1:200-1:2000

## Immunogen

IF: 1:10-1:100

[Human RFC4 Recombinant protein \(GST tag & His tag\)](#)

## Specificity

Human; other species not tested.

## Antibody description

RFC4 Rabbit Polyclonal antibody. Positive WB detected in MCF7 cells, LNCaP cells, MCF-7 cells, Raji cells. Positive IF detected in HepG2 cells. Positive FC detected in HepG2 cells. Observed molecular weight by Western-blot: 40-45 kDa

## Preparation

This antibody was obtained by immunization of RFC4 recombinant protein (Accession Number: NM\_002916). Purification method: Antigen affinity purified.

## Formulation

PBS with 0.1% sodium azide and 50% glycerol pH 7.3.

## Storage

Store at -20°C. DO NOT ALIQUOT

## Clonality

Polyclonal

## Ig Type

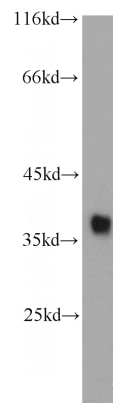
Rabbit IgG

## Applications

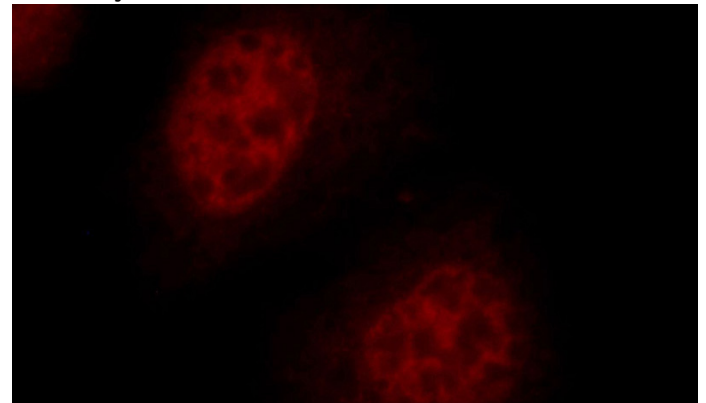
ELISA, WB, IF, FC

## Dilutions

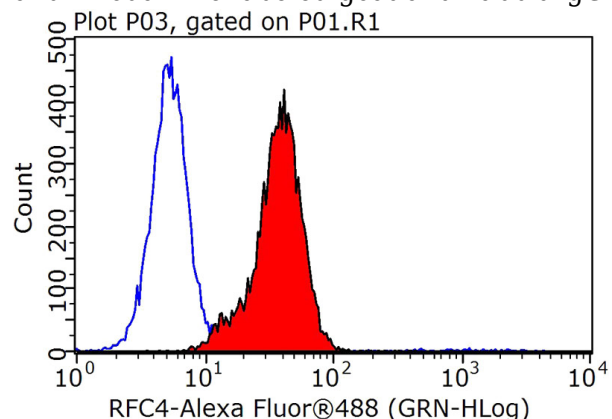
## Validations



MCF7 cells were subjected to SDS PAGE followed by western blot with Catalog No:114625(RFC4 antibody) at dilution of 1:500



Immunofluorescent analysis of HepG2 cells, using RFC4 antibody Catalog No:114625 at 1:25 dilution and Rhodamine-labeled goat anti-rabbit IgG (red).



# RFC4 antibody



Catalog Number: 114625

---

1X10<sup>6</sup> HepG2 cells were stained with 0.2ug RFC4 antibody (Catalog No:114625, red) and control antibody (blue). Fixed with 90% MeOH

blocked with 3% BSA (30 min). Alexa Fluor 488-conjugated AffiniPure Goat Anti-Rabbit IgG(H+L) with dilution 1:1000.