

RAB27A antibody



Catalog Number: 114425

Product name

RAB27A antibody

Immunogen

[Human RAB27A Recombinant protein \(GST tag & His tag\)](#)

Specificity

Human; other species not tested.

Antibody description

RAB27A Rabbit Polyclonal antibody. Positive WB detected in HL-60 cells, Apoptosis HeLa cells, HeLa cells, human liver tissue, Jurkat cells, K-562 cells, L02 cells. Positive IP detected in K-562 cells. Positive IF detected in HepG2 cells. Positive IHC detected in human liver cancer tissue, human kidney tissue. Observed molecular weight by Western-blot: 25-27 kDa

Preparation

This antibody was obtained by immunization of RAB27A recombinant protein (Accession Number: XM_011521855). Purification method: Antigen affinity purified.

Formulation

PBS with 0.02% sodium azide and 50% glycerol pH 7.3.

Storage

Store at -20°C. DO NOT ALIQUOT

Clonality

Polyclonal

Ig Type

Rabbit IgG

Applications

ELISA, WB, IHC, IF, IP

Dilutions

Recommended Dilution:

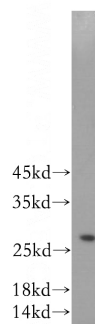
WB: 1:500-1:5000

IP: 1:500-1:5000

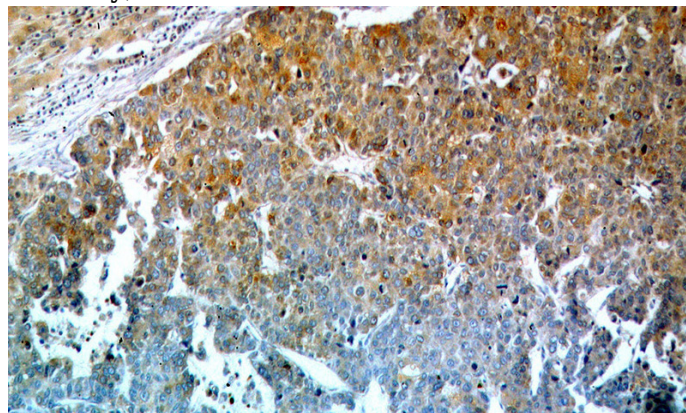
IHC: 1:20-1:200

IF: 1:10-1:100

Validations



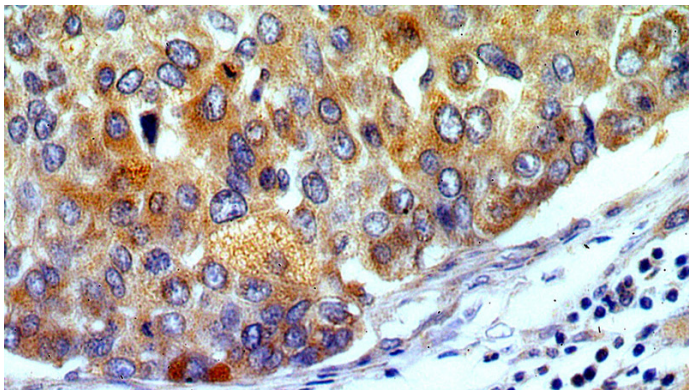
HL-60 cells were subjected to SDS PAGE followed by western blot with Catalog No:114425(RAB27A antibody) at dilution of 1:1000



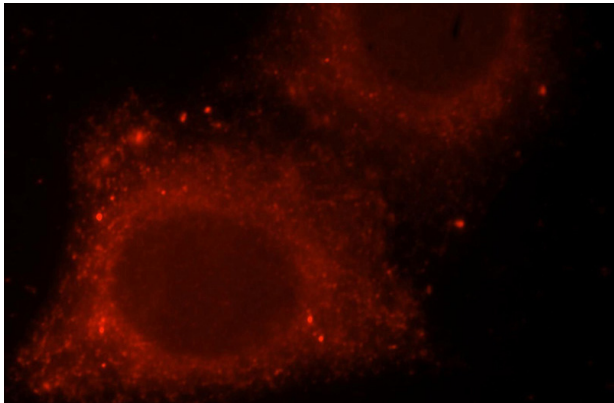
Immunohistochemical of paraffin-embedded human liver cancer using Catalog No:114425(RAB27A antibody) at dilution of 1:100 (under 10x lens)

RAB27A antibody

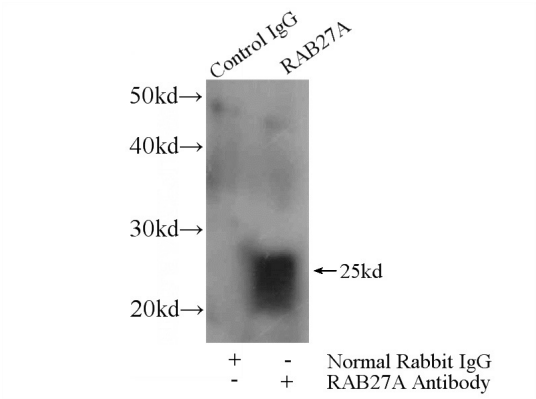
Catalog Number: 114425



Immunohistochemical of paraffin-embedded human liver cancer using Catalog No:114425(RAB27A antibody) at dilution of 1:100 (under 40x lens)



Immunofluorescent analysis of HepG2 cells, using RAB27A antibody Catalog No:114425 at 1:25 dilution and Rhodamine-labeled goat anti-rabbit



IgG (red).

IP Result of anti-RAB27A (IP:Catalog No:114425, 4ug; Detection:Catalog No:114425 1:1000) with K-562 cells lysate 3200ug.