

# LRCH2 antibody



Catalog Number: 112315

## Product name

LRCH2 antibody

## Immunogen

[Human LRCH2 Recombinant protein \(GST tag & His tag\)](#)

## Specificity

Human, Mouse; other species not tested.

## Antibody description

LRCH2 Rabbit Polyclonal antibody. Positive IHC detected in human colon tissue, human brain tissue. Positive WB detected in mouse brain tissue, mouse heart tissue, mouse ovary tissue. Observed molecular weight by Western-blot: 84 kDa

## Preparation

This antibody was obtained by immunization of LRCH2 recombinant protein (Accession Number: NM\_001243963). Purification method: Antigen affinity purified.

## Formulation

PBS with 0.1% sodium azide and 50% glycerol pH 7.3.

## Storage

Store at -20°C. DO NOT ALIQUOT

## Clonality

Polyclonal

## Ig Type

Rabbit IgG

## Applications

ELISA, WB, IHC

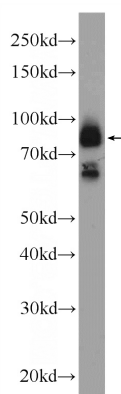
## Dilutions

Recommended Dilution:

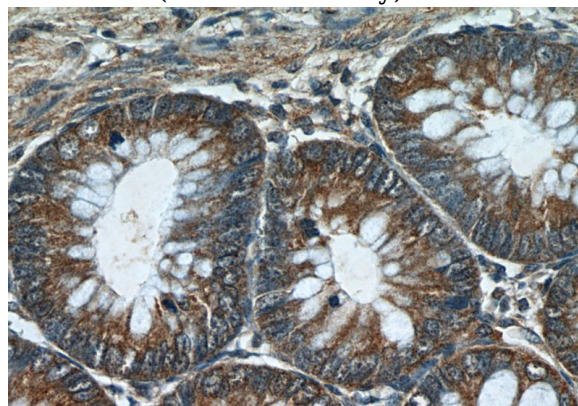
WB: 1:500-1:5000

IHC: 1:20-1:200

## Validations



mouse brain tissue were subjected to SDS PAGE followed by western blot with Catalog No:112315(LRCH2 Antibody) at dilution of 1:1500



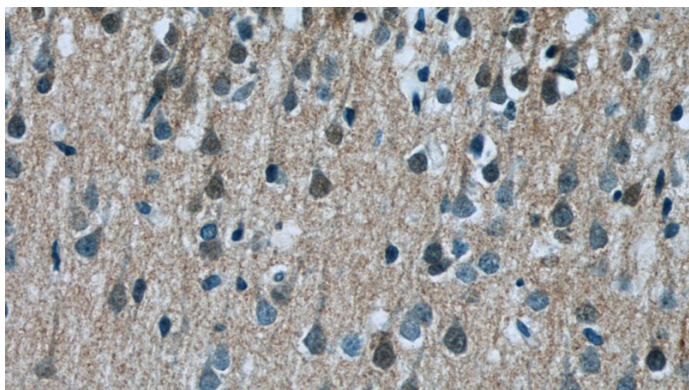
Immunohistochemistry of paraffin-embedded human colon tissue slide using Catalog No:112315(LRCH2 Antibody) at dilution of 1:50 (under 40x lens)

# LRCH2 antibody



Catalog Number: 112315

---



Immunohistochemistry of paraffin-embedded human brain tissue slide using Catalog No:112315(LRCH2 Antibody) at dilution of 1:50 (under 40x lens)