

General Information

Gene Name Synonym

Sentrin-specific protease 2; Axam2; SMT3-specific isopeptidase 2; Sentrin/SUMO-specific protease SENP2; KIAA1331; SENP2.

Protein Construction

A DNA sequence encoding the Human SENP2/KIAA1331 Asp363-Leu589 is expressed.

Organism

Human

Expression Host

E. coli

QC Testing

Purity

>95% as determined by SDS-PAGE.

Endotoxin

<1.0 EU per μg protein as determined by the LAL

method.

Stability

Store for up to 6 months at -20°C

Formulation

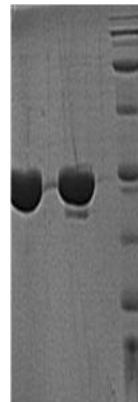
Supplied as a $0.2\ \mu\text{m}$ filtered solution of 50mM HEPES, 5% Glycerol, pH 7.4.

Usage Guide

Storage

Store at $<-20^{\circ}\text{C}$, minimize freeze-thaw cycles.

SDS-PAGE



Human SENP2/KIAA1331 recombinant protein