

alpha cardiac Actin-specific antibody



Catalog Number: 107115

Product name

alpha cardiac Actin-specific antibody

Specificity

Human; other species not tested.

Antibody description

alpha cardiac Actin-specific Mouse Monoclonal antibody. Positive IHC detected in human heart tissue, human heart and human skeletal muscle tissue. Positive WB detected in human heart tissue. Observed molecular weight by Western-blot: 42 kDa

Preparation

This antibody was obtained by immunization of Peptide (Accession Number: NM_005159).
Purification method: Protein G purified.

Formulation

PBS with 0.02% sodium azide and 50% glycerol
pH 7.3.

Storage

Store at -20°C. DO NOT ALIQUOT

Clonality

Monoclonal

Ig Type

Mouse IgG1

Applications

ELISA, WB, IHC

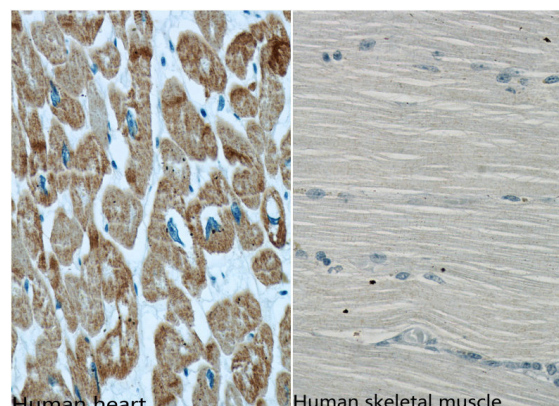
Dilutions

Recommended Dilution:

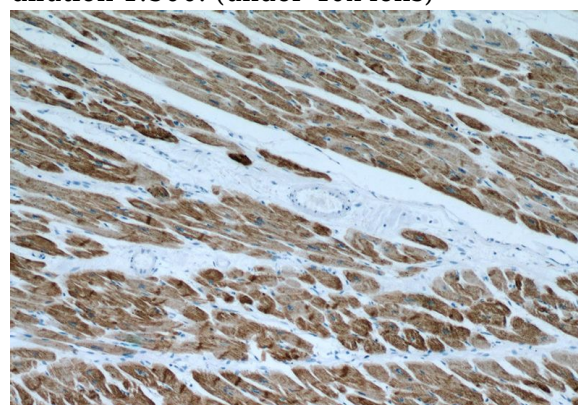
WB: 1:2000-1:20000

IHC: 1:100-1:400

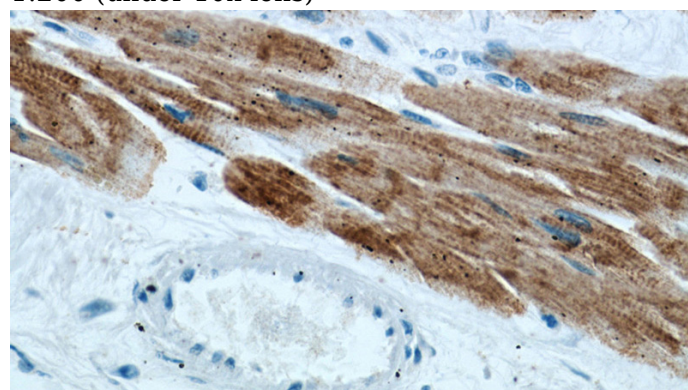
Validations



Immunohistochemistry of paraffin-embedded human heart and human skeletal muscle using Catalog No:107575 (ACTC1 specific antibody) at dilution 1:500. (under 40x lens)



Immunohistochemical of paraffin-embedded human heart using Catalog No:107575(Actin-cardiac-muscle-1-Specific antibody) at dilution of 1:200 (under 10x lens)



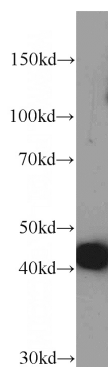
Immunohistochemical of paraffin-embedded human heart using Catalog No:107575(Actin-

alpha cardiac Actin-specific antibody



Catalog Number: 107115

cardiac-muscle-1-Specific antibody) at dilution of



1:200 (under 40x lens)

human heart tissue were subjected to SDS PAGE followed by western blot with Catalog No:107575(Actin-cardiac-muscle-1-Specific antibody) at dilution of 1:5000