

Anti-RAIDD Rabbit antibody



Catalog Number: 167815

Product name

Anti-RAIDD Rabbit antibody

Specificity

Human

Antibody description

RAIDD Rabbit monoclonal antibody

Preparation

Antigen: A synthetic peptide of human RAIDD

Formulation

50nM Tris-Glycine(pH 7.4), 0.15M NaCl,
40%Glycerol, 0.01% sodium azide and 0.05% BSA

Storage

Store at 4°C short term. Store at -20°C long term.
Avoid freeze / thaw cycle.

Clonality

Monoclonal

Ig Type

Rabbit IgG

Applications

WB, IHC-P, ICC/IF, FC, IP

Dilutions

WB: 1/1000

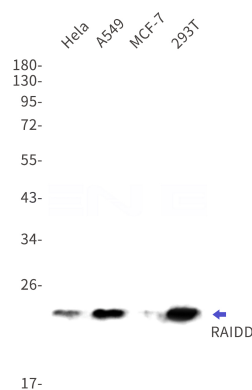
IHC: 1/20

ICC/IF: 1/50

FC: 1/20

IP: 1/20

Validations



Western blot detection of RAIDD in HeLa, A549, MCF-7, 293T cell lysates using RAIDD Rabbit mAb (1:1000 diluted). Predicted band size: 23 kDa. Observed band size: 23 kDa.