

# XPC Polyclonal Antibody



Catalog Number: 165815

## Product name

XPC Polyclonal Antibody

## Specificity

Human

## Antibody description

Polyclonal antibody to XPC

## Preparation

Antigen: Recombinant fusion protein containing a sequence corresponding to amino acids 700-940 of human XPC (NP\_004619.3).

## Formulation

PBS with 0.02% sodium azide, 50% glycerol, pH7.3.

## Storage

Store at -20°C. Avoid freeze / thaw cycles.

## Clonality

Polyclonal

## Ig Type

Rabbit IgG

## Applications

WB, IHC, IP

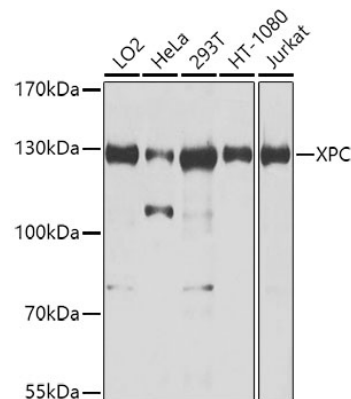
## Dilutions

WB 1:500 - 1:2000

IHC 1:50 - 1:100

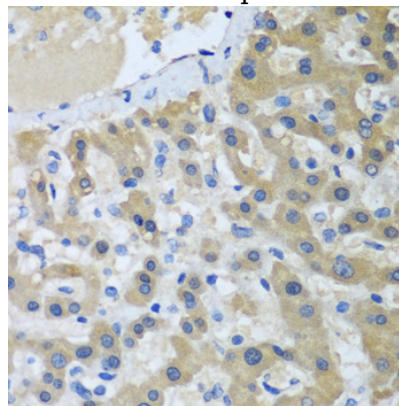
IP 1:50 - 1:100

## Validations



Western blot - XPC Polyclonal Antibody

Western blot analysis of extracts of various cell lines, using XPC antibody at 1:1000 dilution. Secondary antibody: HRP Goat Anti-Rabbit IgG (H+L) at 1:10000 dilution. Lysates/proteins: 25ug per lane. Blocking buffer: 3% nonfat dry milk in TBST. Detection: ECL Enhanced Kit. Exposure time: 5s.



Immunohistochemistry - XPC Polyclonal Antibody

Immunohistochemistry of paraffin-embedded human liver cancer using XPC antibody at dilution of 1:100 (40x lens).