

PHF6 antibody



Catalog Number: 113815

Product name

PHF6 antibody

IHC: 1:20-1:200

IF: 1:50-1:500

Specificity

Human, Mouse; other species not tested.

Antibody description

PHF6 Rabbit Polyclonal antibody. Positive WB detected in HeLa cells, Jurkat cells. Positive IHC detected in human ovary tumor tissue, human cervical cancer tissue. Positive IF detected in HeLa cells. Observed molecular weight by Western-blot: 41 kDa

Preparation

This antibody was obtained by immunization of PHF6 recombinant protein (Accession Number: NM_032335). Purification method: Antigen affinity purified.

Formulation

PBS with 0.1% sodium azide and 50% glycerol pH 7.3.

Storage

Store at -20°C. DO NOT ALIQUOT

Clonality

Polyclonal

Ig Type

Rabbit IgG

Applications

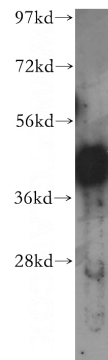
ELISA, WB, IHC, IF

Dilutions

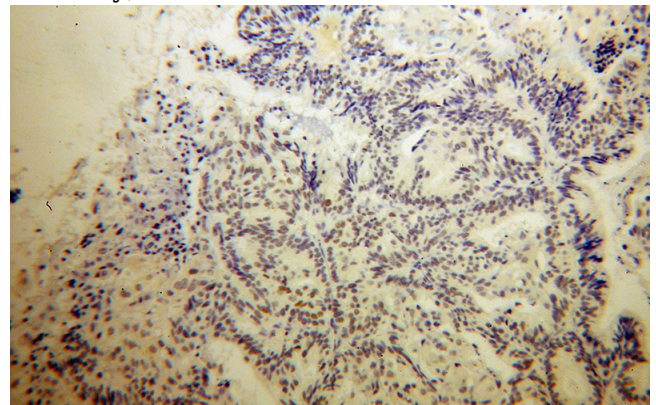
Recommended Dilution:

WB: 1:500-1:5000

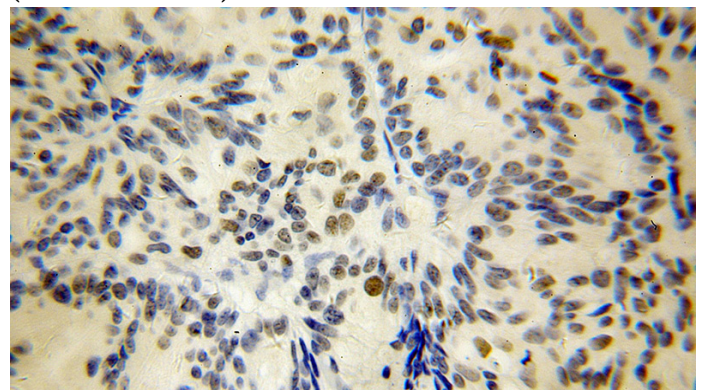
Validations



HeLa cells were subjected to SDS PAGE followed by western blot with Catalog No:113815(PHF6 antibody) at dilution of 1:1000



Immunohistochemical of paraffin-embedded human ovary tumor using Catalog No:113815(PHF6 antibody) at dilution of 1:50 (under 10x lens)



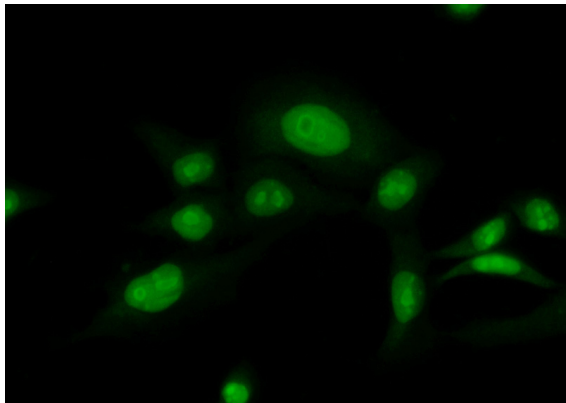
Immunohistochemical of paraffin-embedded

PHF6 antibody



Catalog Number: 113815

human ovary tumor using Catalog
No:113815(PHF6 antibody) at dilution of 1:50
(under 40x lens)



Immunofluorescent analysis of (10%
Formaldehyde) fixed HeLa cells using Catalog
No:113815(PHF6 Antibody) at dilution of 1:50 and
Alexa Fluor 488-conjugated AffiniPure Goat Anti-
Rabbit IgG(H+L)