

Rab18 antibody



Catalog Number: 114415

Product name

Rab18 antibody

Recommended Dilution:

WB: 1:200-1:2000

Specificity

Human, Mouse, Rat; other species not tested.

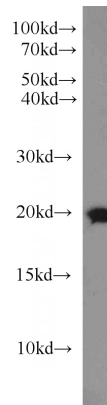
IP: 1:200-1:1000

IHC: 1:20-1:200

Antibody description

Rab18 Rabbit Polyclonal antibody. Positive IP detected in mouse testis tissue. Positive WB detected in human testis tissue, human brain tissue, human heart tissue, mouse testis tissue, PC-3 cells. Positive IHC detected in human prostate cancer tissue, human breast cancer tissue. Observed molecular weight by Western-blot: 20-23 kDa

Validations



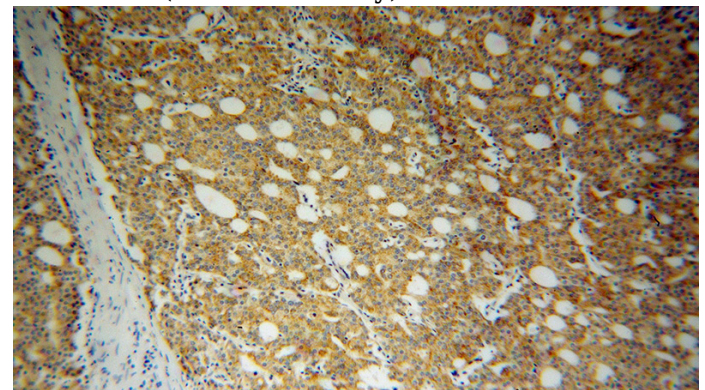
Preparation

This antibody was obtained by immunization of Rab18 recombinant protein (Accession Number: NM_021252). Purification method: Antigen affinity purified.

human testis tissue were subjected to SDS PAGE followed by western blot with Catalog No:114415(RAB18 antibody) at dilution of 1:800

Formulation

PBS with 0.1% sodium azide and 50% glycerol pH 7.3.



Storage

Store at -20°C. DO NOT ALIQUOT

Clonality

Polyclonal

Immunohistochemical of paraffin-embedded human prostate cancer using Catalog No:114415(RAB18 antibody) at dilution of 1:100 (under 10x lens)

Ig Type

Rabbit IgG

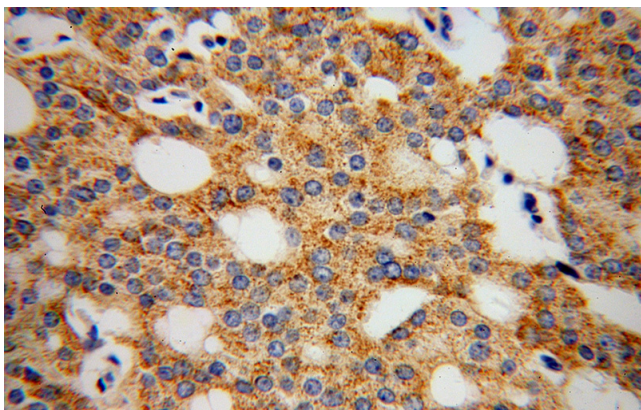
Applications

ELISA, WB, IHC, IP

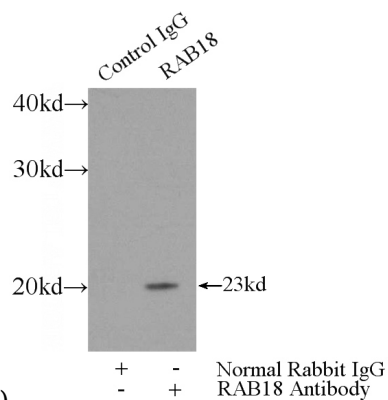
Dilutions

Rab18 antibody

Catalog Number: 114415



Immunohistochemical of paraffin-embedded human prostate cancer using Catalog No:114415(RAB18 antibody) at dilution of 1:100



(under 40x lens)

IP Result of anti-RAB18 (IP:Catalog No:114415, 3ug; Detection:Catalog No:114415 1:300) with mouse testis tissue lysate 4000ug.