

# STEAP3 antibody

Catalog Number: 115705

## Product name

STEAP3 antibody

IP: 1:200-1:2000

IHC: 1:20-1:200

## Specificity

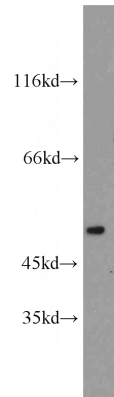
Human, Mouse, Rat; other species not tested.

IF: 1:10-1:100

## Antibody description

STEAP3 Rabbit Polyclonal antibody. Positive IHC detected in human liver tissue. Positive IF detected in Hela cells. Positive WB detected in HepG2 cells, C6 cells. Positive IP detected in C6 cells. Observed molecular weight by Western-blot: 55 kDa

## Validations



## Preparation

This antibody was obtained by immunization of STEAP3 recombinant protein (Accession Number: XM\_006712614). Purification method: Antigen affinity purified.

HepG2 cells were subjected to SDS PAGE followed by western blot with Catalog No:115705(STEAP3 antibody) at dilution of 1:2000

## Formulation

PBS with 0.02% sodium azide and 50% glycerol pH 7.3.

## Storage

Store at -20°C. DO NOT ALIQUOT

## Clonality

Polyclonal

## Ig Type

Rabbit IgG

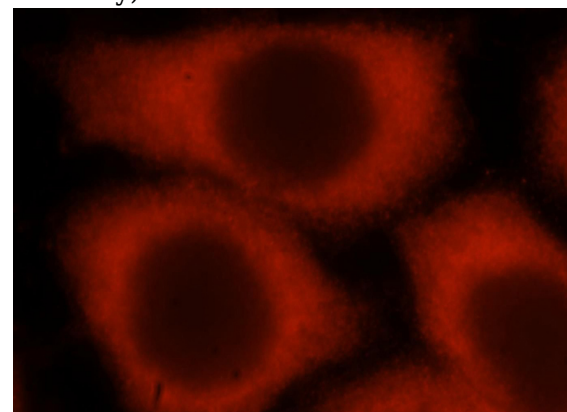
## Applications

ELISA, WB, IF, IHC, IP

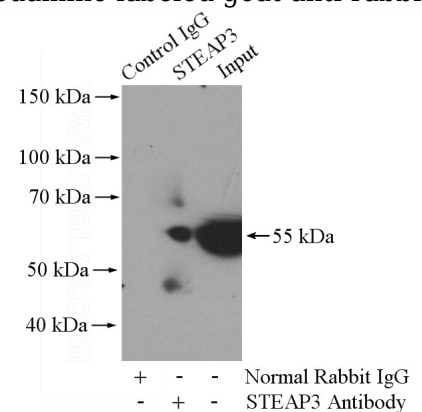
## Dilutions

Recommended Dilution:

WB: 1:1000-1:10000



Immunofluorescent analysis of Hela cells, using STEAP3 antibody Catalog No:115705 at 1:25 dilution and Rhodamine-labeled goat anti-rabbit



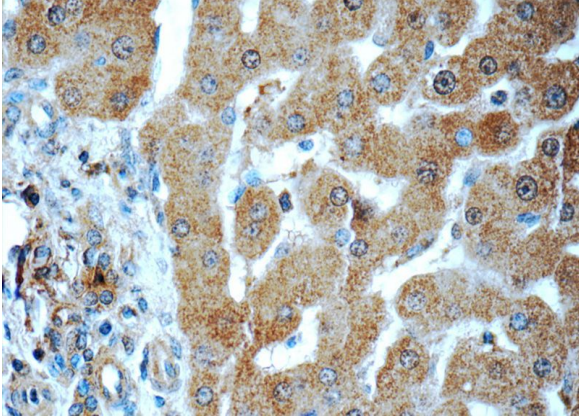
IgG (red).

# STEAP3 antibody

Catalog Number: 115705

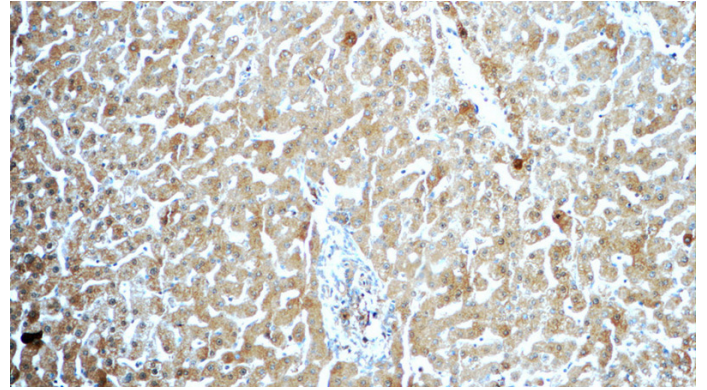
---

IP Result of anti-STEAP3 (IP:Catalog No:115705, 4ug; Detection:Catalog No:115705 1:700) with C6 cells lysate 1000ug.



Immunohistochemistry of paraffin-embedded human liver tissue slide using Catalog

No:115705(STEAP3 Antibody) at dilution of 1:50 (under 40x lens)



Immunohistochemistry of paraffin-embedded human liver tissue slide using Catalog No:115705(STEAP3 Antibody) at dilution of 1:50 (under 10x lens)