

Human EphA1/Eph Receptor A1 (Fc Tag) recombinant protein



Catalog Number: 503305

General Information

Gene Name Synonym

EPH tyrosine kinase; EPH tyrosine kinase 1;
Erythropoietin-producing hepatoma receptor;
Tyrosine-protein kinase receptor EPH

Protein Construction

A DNA sequence encoding the human EPHA1 (EAL23789.1) (Met1-Glu547) was expressed with the Fc region of human IgG1 at the C-terminus.

Organism

Human

Expression Host

Human Cells

QC Testing

Activity

Measured by its binding ability in a functional ELISA.
Immobilized human EFNA1-His(Cat:500400) at 10 µg/ml (100 µl /well) can bind human EPHA1-Fc, The EC₅₀ of human EPHA1-Fc is 10-30 ng/ml.

Purity

> 90 % as determined by SDS-PAGE.

Endotoxin

<1.0 EU per µg protein as determined by the LAL method.

Stability

Samples are stable for up to twelve months from date of receipt at -70°C

Predicted N terminal

Lys 26

Molecular Mass

The recombinant human EPHA1 consists 760 amino acids and predicts a molecular mass of 83.3 kDa.

Formulation

Lyophilized from sterile PBS, pH 7.4.

1. 5 % trehalose and mannitol are added as protectants before lyophilization.
2. Please contact us for any concerns or special requirements.

Usage Guide

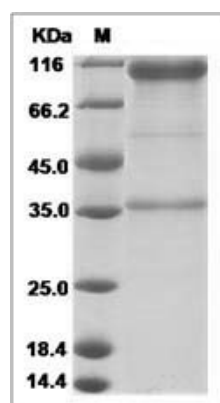
Storage

Store it under sterile conditions at -20°C to -80°C. It is recommended that the protein be aliquoted for optimal storage. Avoid repeated freeze-thaw cycles.

Reconstitution

Adding sterile water, prepare a stock solution of 0.25 mg/ml. Concentration is measured by UV-Vis.

SDS-PAGE



Human EphA1 / Eph Receptor A1 Protein (Fc Tag)