

# Pikachurin antibody



Catalog Number: 113905

## Product name

Pikachurin antibody

## Specificity

Human, Mouse, Rat; other species not tested.

## Antibody description

Pikachurin Rabbit Polyclonal antibody. Positive IF detected in SH-SY5Y cells. Positive WB detected in human placenta tissue, PC-3 cells, SH-SY5Y cells. Observed molecular weight by Western-blot: 60 kDa

## Preparation

This antibody was obtained by immunization of Pikachurin recombinant protein (Accession Number: NM\_182801). Purification method: Antigen affinity purified.

## Formulation

PBS with 0.02% sodium azide and 50% glycerol pH 7.3.

## Storage

Store at -20°C. DO NOT ALIQUOT

## Clonality

Polyclonal

## Ig Type

Rabbit IgG

## Applications

ELISA, WB, IF

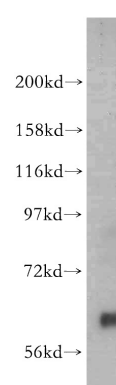
## Dilutions

Recommended Dilution:

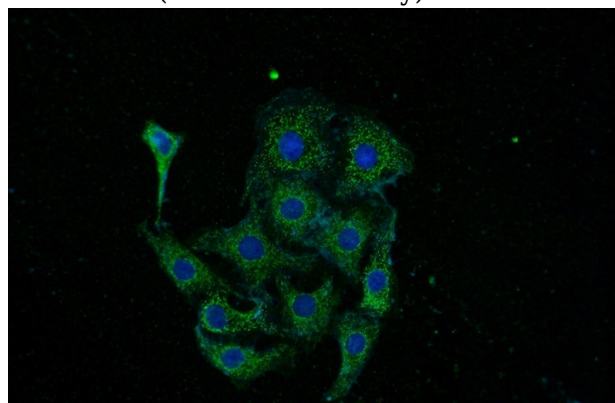
WB: 1:500-1:5000

IF: 1:20-1:200

## Validations



human placenta tissue were subjected to SDS PAGE followed by western blot with Catalog No:113905(EGFLAM antibody) at dilution of 1:400



Immunofluorescent analysis of SH-SY5Y cells using Catalog No:113905(EGFLAM Antibody) at dilution of 1:50 and Alexa Fluor 488-conjugated AffiniPure Goat Anti-Rabbit IgG(H+L)