

# RENALASE antibody



Catalog Number: 107505

## Product name

RENALASE antibody

Recommended Dilution:

WB: 1:1000-1:10000

## Immunogen

IHC: 1:20-1:200

[Human RENALASE Recombinant protein \(His tag\)](#)

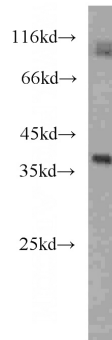
## Validations

## Specificity

Human; other species not tested.

## Antibody description

RENALASE Mouse Monoclonal antibody. Positive IHC detected in human kidney tissue, human skeletal muscle tissue. Positive WB detected in Human heart, human heart tissue. Observed molecular weight by Western-blot: 38 kDa



## Preparation

This antibody was obtained by immunization of RENALASE recombinant protein (Accession Number: NM\_001031709). Purification method: Protein G purified.

## Formulation

PBS with 0.1% sodium azide and 50% glycerol pH 7.3.

## Storage

Store at -20°C. DO NOT ALIQUOT

## Clonality

Monoclonal

## Ig Type

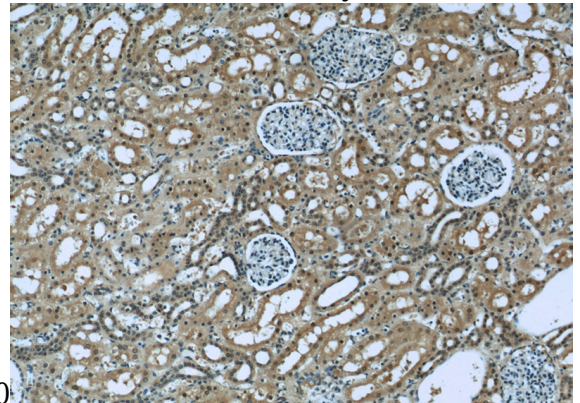
Mouse IgG1

## Applications

ELISA, WB, IHC

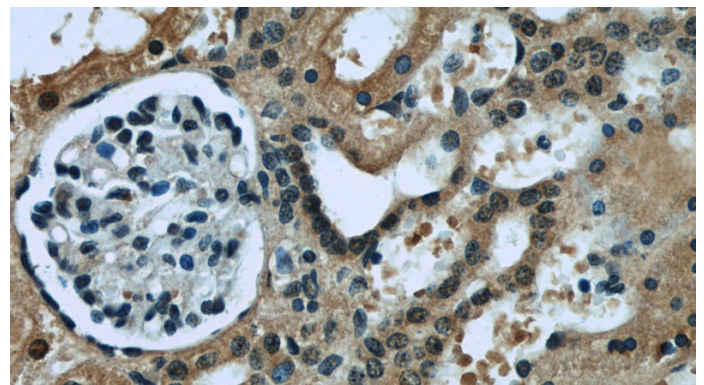
## Dilutions

human heart tissue were subjected to SDS PAGE followed by western blot with Catalog No:107505(RENALASE antibody) at dilution of



1:2000

Immunohistochemistry of paraffin-embedded human kidney slide using Catalog No:107505(RENALASE Antibody) at dilution of 1:50



# RENALASE antibody



Catalog Number: 107505

---

Immunohistochemistry of paraffin-embedded  
human kidney slide using Catalog

No:107505(RENALASE Antibody) at dilution of  
1:50