

# SYTL2 antibody



Catalog Number: 115805

## Product name

SYTL2 antibody

## Immunogen

[Human SYTL2 Recombinant protein \(GST tag & His tag\)](#)

## Specificity

Human, Mouse, Rat; other species not tested.

## Antibody description

SYTL2 Rabbit Polyclonal antibody. Positive IHC detected in human breast cancer tissue. Positive WB detected in Jurkat cells. Observed molecular weight by Western-blot: 100-105kd

## Preparation

This antibody was obtained by immunization of SYTL2 recombinant protein (Accession Number: BC015540). Purification method: Antigen affinity purified.

## Formulation

PBS with 0.1% sodium azide and 50% glycerol pH 7.3.

## Storage

Store at -20°C. DO NOT ALIQUOT

## Clonality

Polyclonal

## Ig Type

Rabbit IgG

## Applications

ELISA, WB, IHC

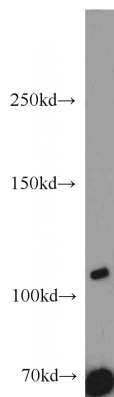
## Dilutions

Recommended Dilution:

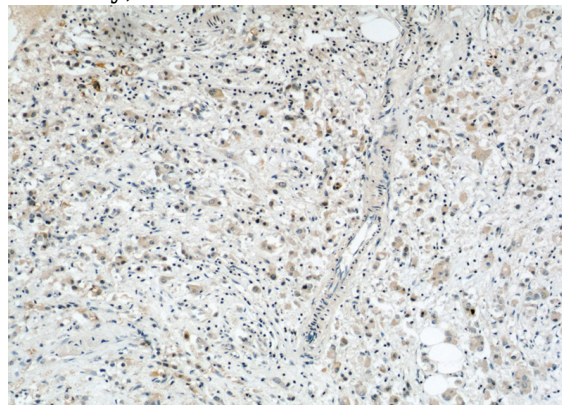
WB: 1:200-1:2000

IHC: 1:20-1:200

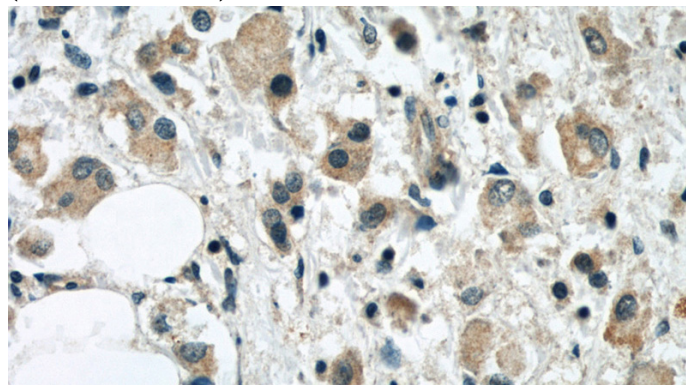
## Validations



Jurkat cells were subjected to SDS PAGE followed by western blot with Catalog No:115805(SYTL2 antibody) at dilution of 1:500



Immunohistochemical of paraffin-embedded human breast cancer using Catalog No:115805(SYTL2 antibody) at dilution of 1:50 (under 10x lens)



# SYTL2 antibody



Catalog Number: 115805

---

Immunohistochemical of paraffin-embedded  
human breast cancer using Catalog

No:115805(SYTL2 antibody) at dilution of 1:50  
(under 40x lens)