

# CLTA antibody



Catalog Number: 109405

## Product name

CLTA antibody

## Immunogen

[Human CLTA Recombinant protein \(GST tag & His tag\)](#)

## Specificity

Human, Mouse, Rat; other species not tested.

## Antibody description

CLTA Rabbit Polyclonal antibody. Positive WB detected in mouse brain tissue, HEK-293 cells. Positive IP detected in mouse brain tissue. Positive IF detected in HeLa cells, HEK-293 cells. Positive IHC detected in human breast cancer tissue. Observed molecular weight by Western-blot: 35-38 kDa

## Preparation

This antibody was obtained by immunization of CLTA recombinant protein (Accession Number: NM\_001833). Purification method: Antigen affinity purified.

## Formulation

PBS with 0.1% sodium azide and 50% glycerol pH 7.3.

## Storage

Store at -20°C. DO NOT ALIQUOT

## Clonality

Polyclonal

## Ig Type

Rabbit IgG

## Applications

ELISA, WB, IHC, IP, IF

## Dilutions

Recommended Dilution:

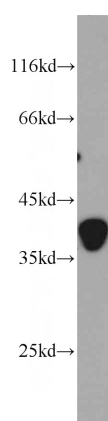
WB: 1:200-1:2000

IP: 1:200-1:2000

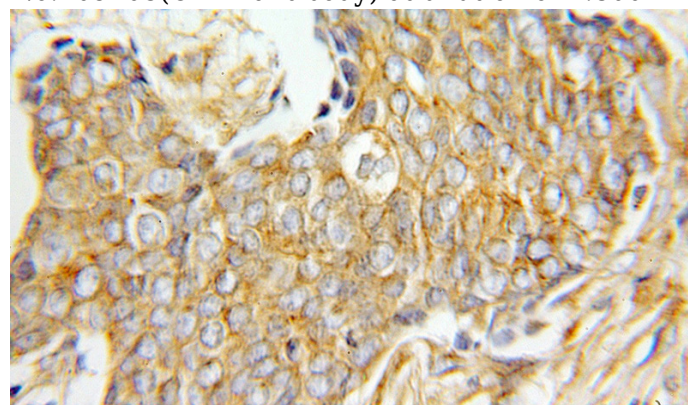
IHC: 1:20-1:200

IF: 1:20-1:200

## Validations



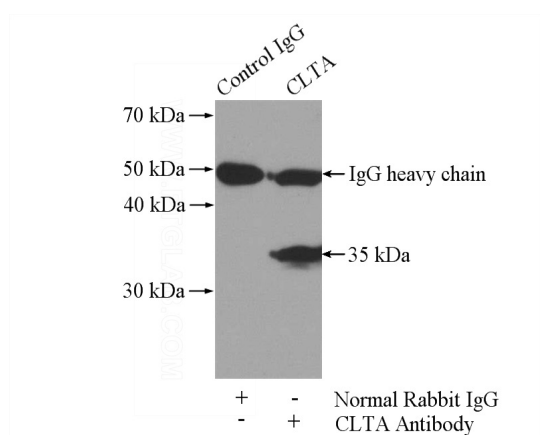
mouse brain tissue were subjected to SDS PAGE followed by western blot with Catalog No:109405 (CLTA antibody) at dilution of 1:800



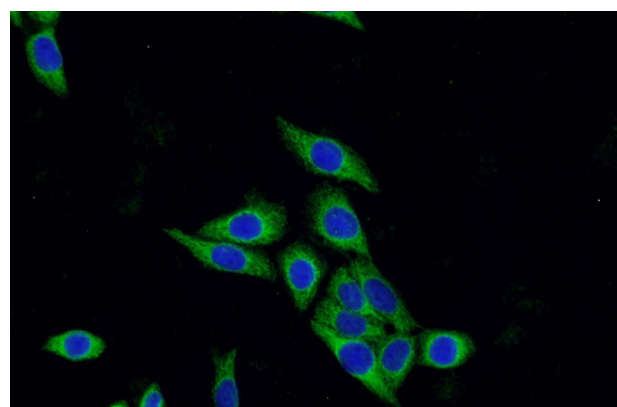
Immunohistochemical of paraffin-embedded human breast cancer using Catalog No:109405 (CLTA antibody) at dilution of 1:100 (under 10x lens)

# CLTA antibody

Catalog Number: 109405



IP Result of anti-CLTA (IP:Catalog No:109405, 4ug; Detection:Catalog No:109405 1:800) with mouse brain tissue lysate 4000ug.



Immunofluorescent analysis of HeLa cells using Catalog No:109405(CLTA Antibody) at dilution of 1:50 and Alexa Fluor 488-conjugated AffiniPure Goat Anti-Rabbit IgG(H+L)