

YTHDF1 antibody



Catalog Number: 116894

Product name

YTHDF1 antibody

Immunogen

[Human YTHDF1 Recombinant protein \(GST tag & His tag\)](#)

Specificity

Human, Mouse, Rat; other species not tested.

Antibody description

YTHDF1 Rabbit Polyclonal antibody. Positive WB detected in HeLa cells, A549 cells, HepG2 cells, Jurkat cells, mouse brain tissue. Positive IP detected in mouse brain tissue. Positive IHC detected in human brain tissue, human kidney tissue, human ovary tissue, human spleen tissue, human testis tissue. Observed molecular weight by Western-blot: 61 kDa

Preparation

This antibody was obtained by immunization of YTHDF1 recombinant protein (Accession Number: NM_017798). Purification method: Antigen affinity purified.

Formulation

PBS with 0.02% sodium azide and 50% glycerol pH 7.3.

Storage

Store at -20°C. DO NOT ALIQUOT

Clonality

Polyclonal

Ig Type

Rabbit IgG

Applications

ELISA, WB, IHC, IP

Dilutions

Recommended Dilution:

WB: 1:500-1:5000

IP: 1:500-1:5000

IHC: 1:20-1:200

Validations

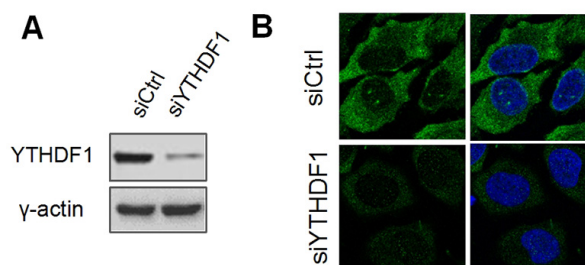
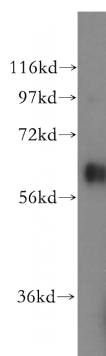


Fig. (A) YTHDF1 knock down detection in HeLa cells. (B) The IF of YTHDF1 knock down in HeLa cells.

WB and IF result of YTHDF1 antibody (Catalog No:116894) with siRNA transfected HeLa cells.

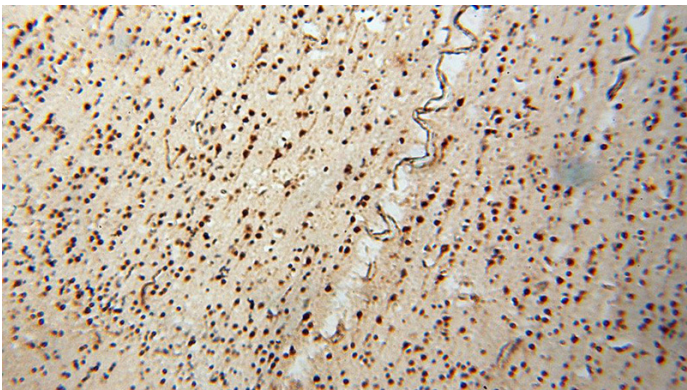


HeLa cells were subjected to SDS PAGE followed by western blot with Catalog No:116894(YTHDF1 antibody) at dilution of 1:500

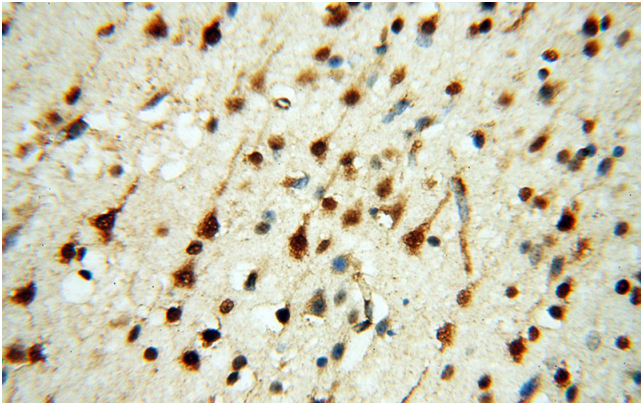
YTHDF1 antibody



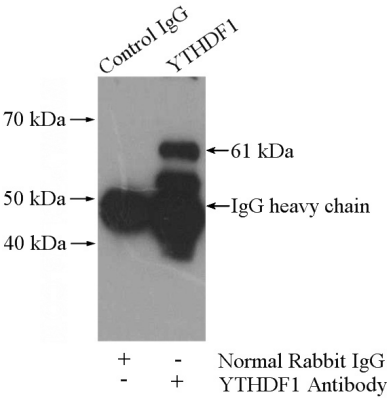
Catalog Number: 116894



Immunohistochemical of paraffin-embedded human brain using Catalog No:116894(YTHDF1 antibody) at dilution of 1:100 (under 10x lens)



Immunohistochemical of paraffin-embedded human brain using Catalog No:116894(YTHDF1 antibody) at dilution of 1:100 (under 40x lens)



IP Result of anti-YTHDF1 (IP:Catalog No:116894, 4ug; Detection:Catalog No:116894 1:1000) with mouse brain tissue lysate 2640ug.