

## General Information

### Gene Name Synonym

Lanimostim; Processed macrophage colony-stimulating factor 1

### Protein Construction

A DNA sequence encoding the human CSF1 (NP\_757349.1) (Met1-Asn190) was expressed with an initial Met.

### Organism

Human

### Expression Host

Human Cells

## QC Testing

### Activity

Measured in a cell proliferation assay using M-NFS-60 mouse myelogenous leukemia lymphoblast cells. The ED<sub>50</sub> for this effect is typically 1.6-6.3 ng/mL.

### Purity

> 85 % as determined by SDS-PAGE.

### Endotoxin

<1.0 EU per µg protein as determined by the LAL method.

### Stability

Samples are stable for up to twelve months from date of receipt at -70°C

### Predicted N terminal

Glu 37

### Molecular Mass

The recombinant human CSF1 consists 158 amino acids and predicts a molecular mass of 18.4 kDa.

### Formulation

Lyophilized from sterile PBS, pH 7.4.

1. 5 % trehalose and mannitol are added as protectants before lyophilization.
2. Please contact us for any concerns or special requirements.

## Usage Guide

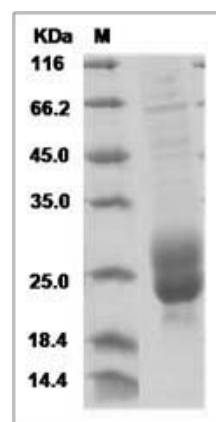
### Storage

Store it under sterile conditions at -20°C to -80°C. It is recommended that the protein be aliquoted for optimal storage. Avoid repeated freeze-thaw cycles.

### Reconstitution

Adding sterile water, prepare a stock solution of 0.25 mg/ml. Concentration is measured by UV-Vis.

### SDS-PAGE



Human M-CSF / CSF-1 Protein SDS-PAGE