

# Anti-Arp3 Rabbit antibody



Catalog Number: 167284

## Product name

Anti-Arp3 Rabbit antibody

## Specificity

Human, Mouse, Rat

## Antibody description

Arp3 Rabbit polyclonal antibody

## Preparation

Antigen: A synthetic peptide of human Arp3

## Formulation

Supplied in 50nM Tris-Glycine(pH 7.4), 0.15M NaCl, 40%Glycerol, 0.01% sodium azide and 0.05% BSA.

## Storage

Store at -20°C. Stable for 12 months from date of receipt.

## Clonality

Polyclonal

## Ig Type

Rabbit IgG

## Applications

WB, IHC-P, ICC/IF, FC

## Dilutions

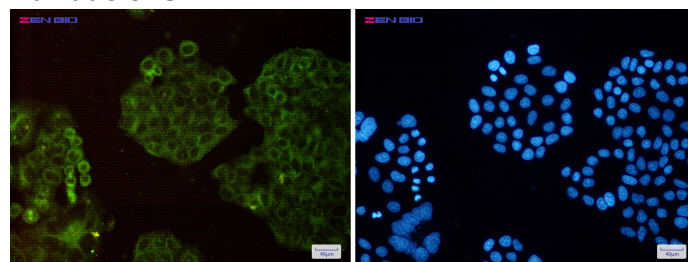
WB: 1/1000

IHC: 1/50

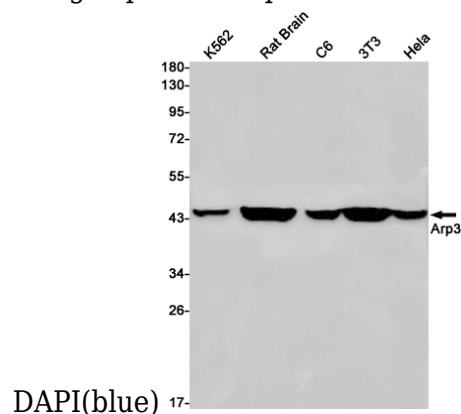
ICC/IF: 1/20

FC: 1/20

## Validations



Immunocytochemistry of Arp3(green) in HeLa cells using Arp3 Rabbit pAb at dilution 1/50, and



Western blot detection of Arp3 in K562, Rat Brain, C6, 3T3, HeLa cell lysates using Arp3 Rabbit pAb(1:1000 diluted). Predicted band size: 47kDa. Observed band size: 47kDa.