

# MTG1 antibody



Catalog Number: 112774

## Product name

MTG1 antibody

## Specificity

Human, Mouse, Rat; other species not tested.

## Antibody description

MTG1 Rabbit Polyclonal antibody. Positive IF detected in SH-SY5Y cells. Positive WB detected in human brain tissue, human liver tissue. Observed molecular weight by Western-blot: 37 kDa

## Preparation

This antibody was obtained by immunization of MTG1 recombinant protein (Accession Number: BC035721). Purification method: Antigen affinity purified.

## Formulation

PBS with 0.02% sodium azide and 50% glycerol pH 7.3.

## Storage

Store at -20°C. DO NOT ALIQUOT

## Clonality

Polyclonal

## Ig Type

Rabbit IgG

## Applications

ELISA, WB, IF

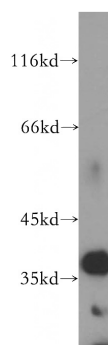
## Dilutions

Recommended Dilution:

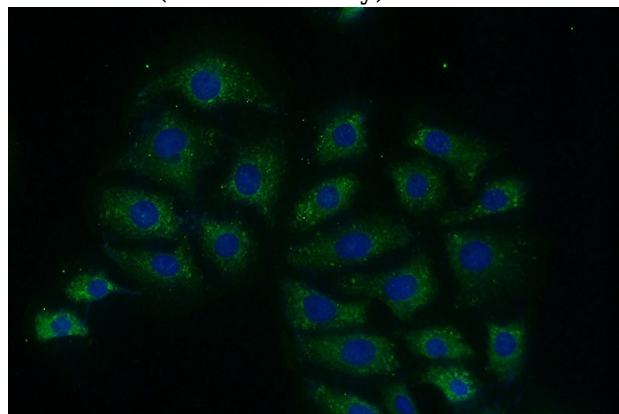
WB: 1:1000-1:10000

IF: 1:20-1:200

## Validations



human brain tissue were subjected to SDS PAGE followed by western blot with Catalog No:112774(MTG1 antibody) at dilution of 1:300



Immunofluorescent analysis of (-20oc Ethanol) fixed SH-SY5Y cells using Catalog No:112774(MTG1 Antibody) at dilution of 1:50 and Alexa Fluor 488-conjugated AffiniPure Goat Anti-Rabbit IgG(H+L)