

IFT88 antibody



Catalog Number: 111674

Product name

IFT88 antibody

Immunogen

[Human IFT88 Recombinant protein \(GST tag & His tag\)](#)

Specificity

Human, Mouse, Rat, Dog; other species not tested.

Antibody description

IFT88 Rabbit Polyclonal antibody. Positive WB detected in HEK-293 cells, A549 cells, HepG2 cells, Jurkat cells, K-562 cells, mouse brain tissue, mouse eye tissue, mouse kidney tissue, mouse testis tissue, mouse thymus tissue, NIH/3T3 cells. Positive IP detected in kn^oCkout cells and WT cells, HEK-293 cells. Positive IHC detected in human heart tissue, human pancreas tissue. Positive IF detected in MDCK cells, hTERT-RPE1 cells. Observed molecular weight by Western-blot: 88-95 kDa

Preparation

This antibody was obtained by immunization of IFT88 recombinant protein (Accession Number: NM_001353567). Purification method: Antigen affinity purified.

Formulation

PBS with 0.02% sodium azide and 50% glycerol pH 7.3.

Storage

Store at -20°C. DO NOT ALIQUOT

Clonality

Polyclonal

Ig Type

Rabbit IgG

Applications

ELISA, WB, IP, IHC, IF

Dilutions

Recommended Dilution:

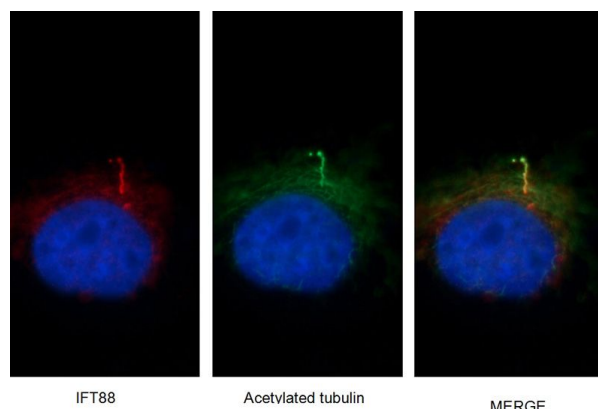
WB: 1:200-1:2000

IP: 1:200-1:2000

IHC: 1:20-1:200

IF: 1:20-1:200

Validations

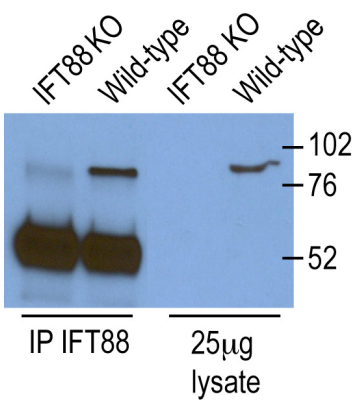


Immunofluorescent images of MDCK cells stained with IFT88 rabbit pAb (Catalog No:111674) and acetylated tubulin mouse mAb (Catalog No:107557) at dilution of 1:50, further stained with Alexa Fluor 594-conjugated AffiniPure Goat Anti-Rabbit IgG(H+L) for Catalog No:111674, and Alexa Fluor 488-conjugated AffiniPure Goat anti-Mouse IgG(H+L) for Catalog No:107557.

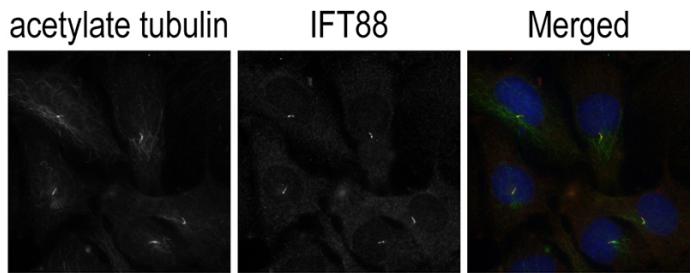
IFT88 antibody



Catalog Number: 111674

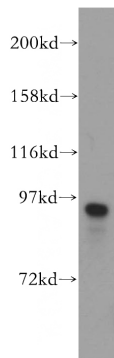


IP and WB result of IFT88(Catalog No:111674) from Dr. Corbit, Kevin. Knockout cells and WT cells.



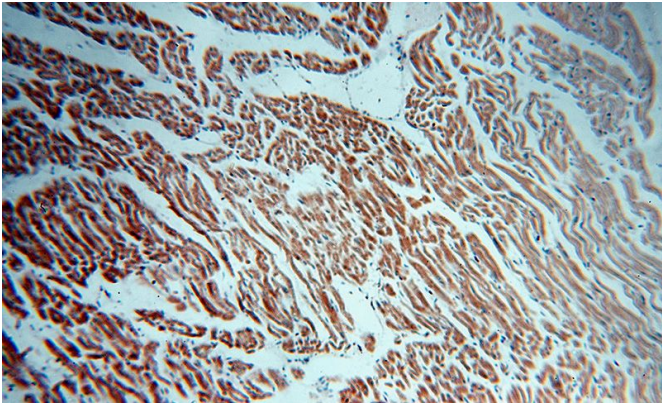
Dr. Andrew Kodani, Reiter Lab UCSF

IF result of anti-IFT88(Catalog No:111674) from

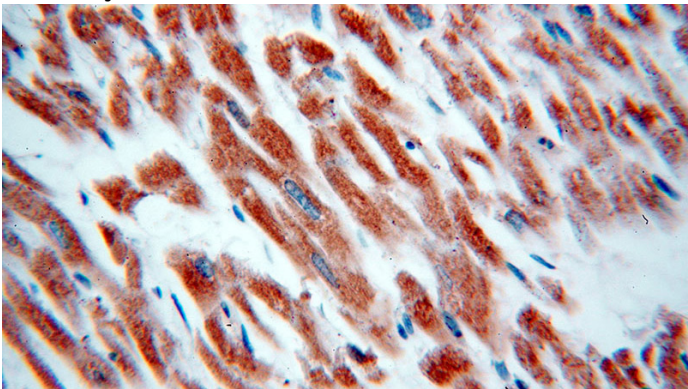


Dr. Corbit, Kevin.

HEK-293 cells were subjected to SDS PAGE followed by western blot with Catalog No:111674(IFT88 antibody) at dilution of 1:1000



Immunohistochemical of paraffin-embedded human heart using Catalog No:111674(IFT88 antibody) at dilution of 1:50 (under 10x lens)



Immunohistochemical of paraffin-embedded human heart using Catalog No:111674(IFT88 antibody) at dilution of 1:50 (under 40x lens)