

# HBS1L antibody



Catalog Number: 111274

## Product name

HBS1L antibody

WB: 1:500-1:5000

IP: 1:500-1:5000

## Specificity

Human, Mouse, Rat; other species not tested.

IHC: 1:20-1:200

IF: 1:10-1:100

## Antibody description

HBS1L Rabbit Polyclonal antibody. Positive IF detected in HepG2 cells. Positive IHC detected in human pancreas cancer tissue. Positive WB detected in Jurkat cells, A2780 cells, mouse brain tissue. Positive IP detected in mouse brain tissue. Observed molecular weight by Western-blot: 75 kDa

## Preparation

This antibody was obtained by immunization of HBS1L recombinant protein (Accession Number: NM\_006620). Purification method: Antigen affinity purified.

## Formulation

PBS with 0.1% sodium azide and 50% glycerol pH 7.3.

## Storage

Store at -20°C. DO NOT ALIQUOT

## Clonality

Polyclonal

## Ig Type

Rabbit IgG

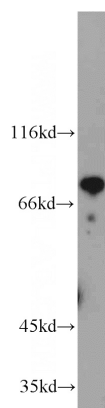
## Applications

ELISA, WB, IHC, IF, IP

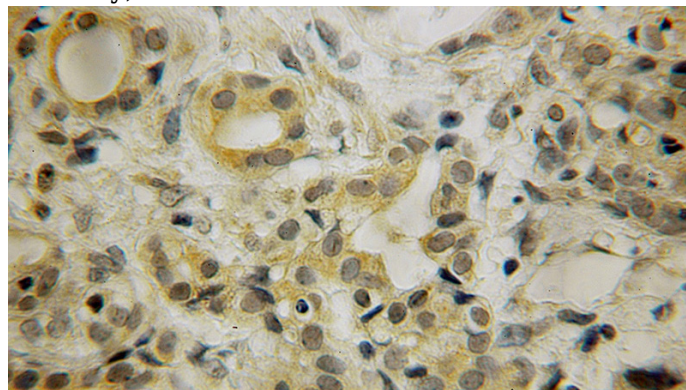
## Dilutions

Recommended Dilution:

## Validations



Jurkat cells were subjected to SDS PAGE followed by western blot with Catalog No:111274(HBS1L antibody) at dilution of 1:2000

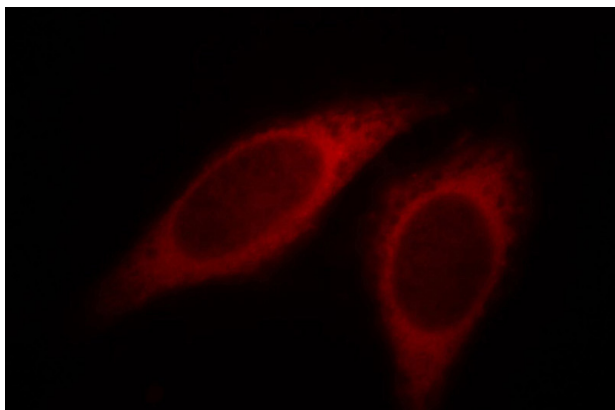


Immunohistochemical of paraffin-embedded human pancreas cancer using Catalog No:111274(HBS1L antibody) at dilution of 1:50 (under 25x lens)

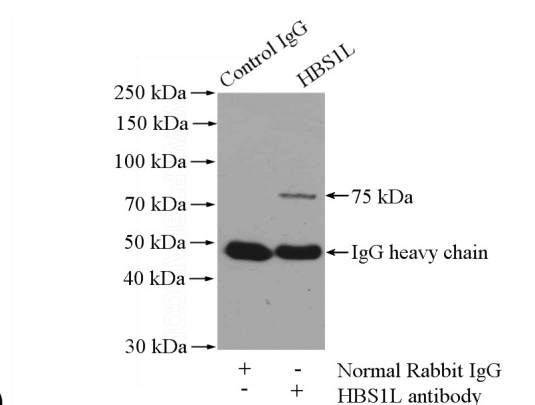
# HBS1L antibody



Catalog Number: 111274



Immunofluorescent analysis of HepG2 cells, using HBS1L antibody Catalog No:111274 at 1:25 dilution and Rhodamine-labeled goat anti-rabbit



IgG (red).

IP Result of anti-HBS1L (IP:Catalog No:111274, 4ug; Detection:Catalog No:111274 1:1000) with mouse brain tissue lysate 4000ug.