

# MAP2 antibody



Catalog Number: 112474

## Product name

MAP2 antibody

## Immunogen

[Human MAP2 Recombinant protein \(GST tag & His tag\)](#)

## Specificity

Human, Mouse, Rat; other species not tested.

## Antibody description

MAP2 Rabbit Polyclonal antibody. Positive IF detected in Hela cells. Positive IHC detected in human brain tissue, mouse brain tissue, rat brain tissue. Positive IP detected in mouse brain tissue. Positive WB detected in SH-SY5Y cells, mouse brain tissue. Observed molecular weight by Western-blot: 280 kDa, 70-85 kDa

## Preparation

This antibody was obtained by immunization of MAP2 recombinant protein (Accession Number: XM\_017004139). Purification method: Antigen affinity purified.

## Formulation

PBS with 0.02% sodium azide and 50% glycerol pH 7.3.

## Storage

Store at -20°C. DO NOT ALIQUOT

## Clonality

Polyclonal

## Ig Type

Rabbit IgG

## Applications

ELISA, WB, IF, IP, IHC

## Dilutions

Recommended Dilution:

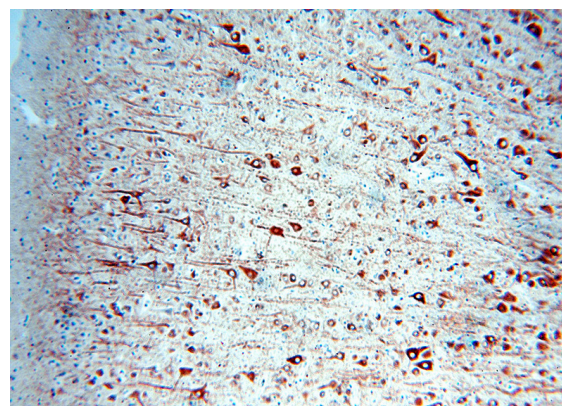
WB: 1:500-1:5000

IP: 1:500-1:5000

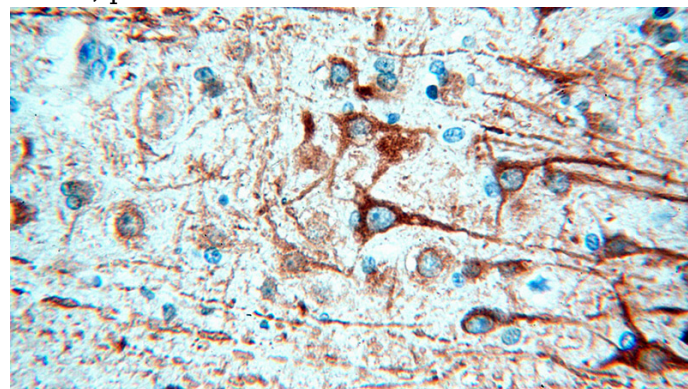
IHC: 1:20-1:200

IF: 1:10-1:100

## Validations



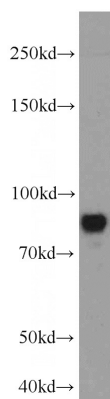
Immunohistochemical of paraffin-embedded human brain using Catalog No:112474(MAP2 antibody) at dilution of 1:100 (under 10x lens). Heat mediated antigen retrieved with Citric acid buffer, pH6.0.



Immunohistochemical of paraffin-embedded human brain using Catalog No:112474(MAP2 antibody) at dilution of 1:100 (under 40x lens). Heat mediated antigen retrieved with Citric acid

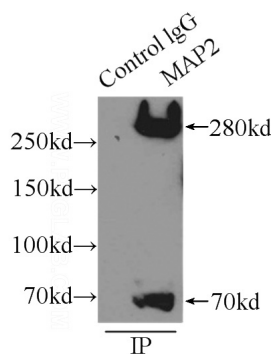
# MAP2 antibody

Catalog Number: 112474

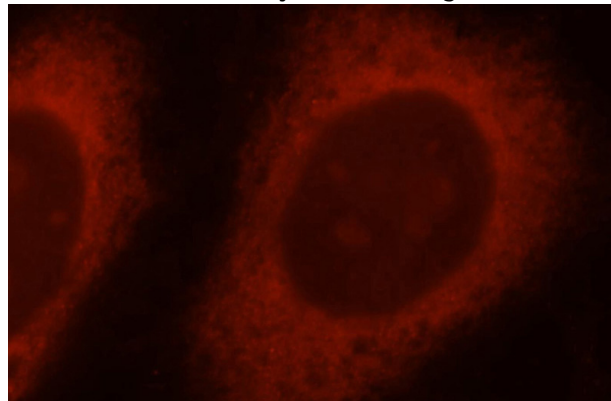


buffer, pH6.0.

SH-SY5Y cells were subjected to SDS PAGE followed by western blot with Catalog No:112474(MAP2 antibody) at dilution of 1:1000



IP Result of anti-MAP2 (IP:Catalog No:112474, 3ug; Detection:Catalog No:112474 1:1000) with mouse brain tissue lysate 5000ug.



Immunofluorescent analysis of HeLa cells, using Catalog No:112474 and Rhodamine-labeled goat anti-rabbit IgG (red).