

Human CXCL3 / GRO gamma (His Tag) recombinant protein



Catalog Number: 501074

General Information

Gene Name Synonym

GRO-gamma(1-73); Growth-regulated protein gamma; Macrophage inflammatory protein 2-beta; GRO-gamma(5-73)

Protein Construction

A DNA sequence encoding the human CXCL3 (NP_002081.2) (Ala35-Asn107) was expressed with a polyhistidine tag at the N-terminus.

Organism

Human

Expression Host

E. coli

QC Testing

Purity

> 90 % as determined by SDS-PAGE

Endotoxin

Please contact us for more information.

Stability

Samples are stable for up to twelve months from date of receipt at -70°C

Predicted N terminal

His

Molecular Mass

The recombinant human CXCL3 consists of 91 amino acids and predicts a molecular mass of 10.1 KDa. It migrates as an approximately 11-15 KDa band in SDS-PAGE under reducing conditions.

Formulation

Lyophilized from sterile PBS, pH 7.4.

1. 5 % trehalose and mannitol are added as protectants before lyophilization.

2. Please contact us for any concerns or special requirements.

Usage Guide

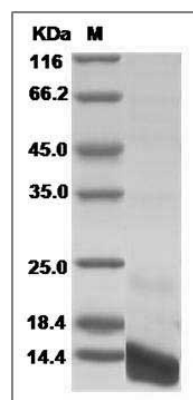
Storage

Store it under sterile conditions at -20°C to -80°C. It is recommended that the protein be aliquoted for optimal storage. Avoid repeated freeze-thaw cycles.

Reconstitution

Adding sterile water, prepare a stock solution of 0.25 mg/ml. Concentration is measured by UV-Vis.

SDS-PAGE



Human CXCL3 / GRO gamma Protein (His Tag)
SDS-PAGE