

Anti-Histone H2B Rabbit antibody



Catalog Number: 167364

Product name

Anti-Histone H2B Rabbit antibody

WB: 1/5000

IHC: 1/20

Specificity

Human, Mouse, Rat

FC: 1/20

IP: 1/20

Antibody description

Histone H2B Rabbit polyclonal antibody

Preparation

Antigen: A synthetic peptide of human Histone H2B

Formulation

Supplied in 50nM Tris-Glycine(pH 7.4), 0.15M NaCl, 40%Glycerol, 0.01% sodium azide and 0.05% BSA.

Storage

Store at -20°C. Stable for 12 months from date of receipt.

Clonality

Polyclonal

Ig Type

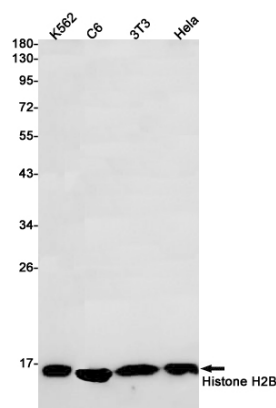
Rabbit IgG

Applications

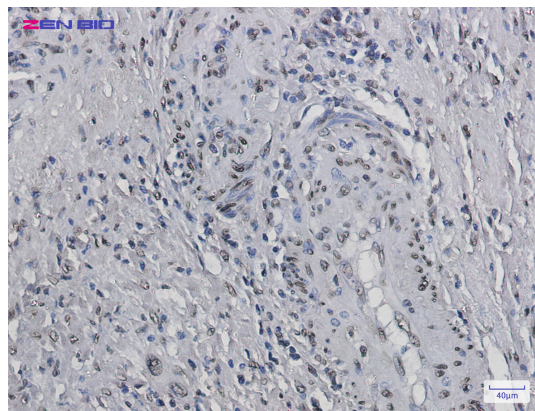
WB, IHC-P, FC, IP

Dilutions

Validations



Western blot detection of Histone H2B in K562,C6,3T3,HeLa cell lysates using Histone H2B Rabbit pAb(1:1000 diluted).Predicted band size:14kDa.Observed band size:14kDa.



Immunohistochemistry of Histone H2B in paraffin-embedded Human colon cancer tissue using Histone H2B Rabbit pAb at dilution 1/20