

FIGNL1 antibody



Catalog Number: 110664

Product name

FIGNL1 antibody

Recommended Dilution:

WB: 1:200-1:2000

Immunogen

[Human FIGNL1 Recombinant protein \(GST tag & His tag\)](#)

IP: 1:500-1:5000

IF: 1:50-1:500

Specificity

Human, Mouse, Rat; other species not tested.

Antibody description

FIGNL1 Rabbit Polyclonal antibody. Positive IF detected in HeLa cells. Positive WB detected in HeLa cells. Positive IP detected in HeLa cells. Observed molecular weight by Western-blot: 66-71 kDa

Preparation

This antibody was obtained by immunization of FIGNL1 recombinant protein (Accession Number: NM_001346560). Purification method: Antigen affinity purified.

Formulation

PBS with 0.02% sodium azide and 50% glycerol pH 7.3.

Storage

Store at -20°C. DO NOT ALIQUOT

Clonality

Polyclonal

Ig Type

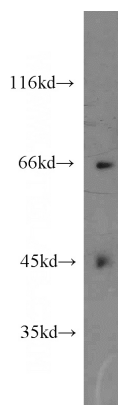
Rabbit IgG

Applications

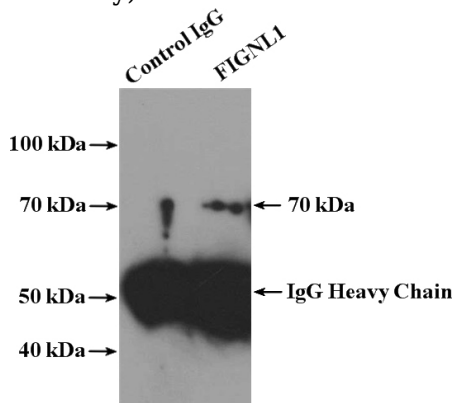
ELISA, WB, IP, IF

Dilutions

Validations



HeLa cells were subjected to SDS PAGE followed by western blot with Catalog No:110664(FIGNL1 antibody) at dilution of 1:1500

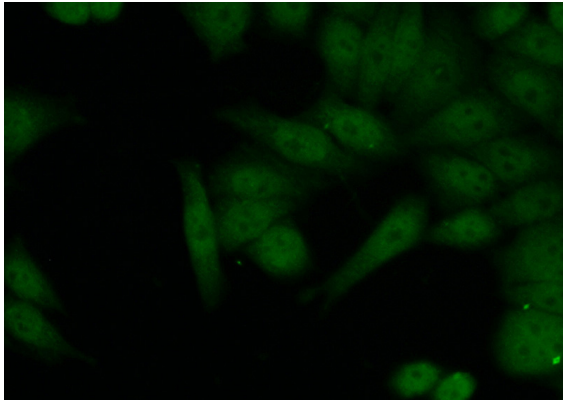


IP Result of anti-FIGNL1 (IP:Catalog No:110664, 4ug; Detection:Catalog No:110664 1:1000) with HeLa cells lysate 2680ug.

FIGNL1 antibody



Catalog Number: 110664



Immunofluorescent analysis of (10% Formaldehyde) fixed HeLa cells using Catalog No:110664(FIGNL1 Antibody) at dilution of 1:50 and Alexa Fluor 488-conjugated AffiniPure Goat Anti-Rabbit IgG(H+L)