

# PTEN antibody



Catalog Number: 114264

## Product name

PTEN antibody

Recommended Dilution:

WB: 1:200-1:2000

## Specificity

Human, Mouse; other species not tested.

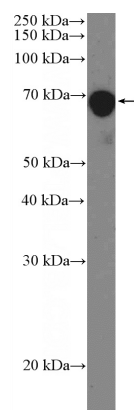
IHC: 1:20-1:200

IF: 1:50-1:500

## Antibody description

PTEN Rabbit Polyclonal antibody. Positive WB detected in DU 145 cells, HeLa cells, MKN-45 cells, mouse thymus tissue. Positive IHC detected in human prostate cancer tissue, human breast cancer tissue, human colon cancer tissue, human testis tissue, mouse brain tissue. Positive IF detected in HeLa cells. Observed molecular weight by Western-blot: 65-68 kDa

## Validations



## Preparation

This antibody was obtained by immunization of PTEN recombinant protein (Accession Number: NM\_000314). Purification method: Antigen affinity purified.

DU 145 cells were subjected to SDS PAGE followed by western blot with Catalog No:114264(PTEN Antibody) at dilution of 1:600

## Formulation

PBS with 0.02% sodium azide and 50% glycerol pH 7.3.

## Storage

Store at -20°C. DO NOT ALIQUOT

## Clonality

Polyclonal

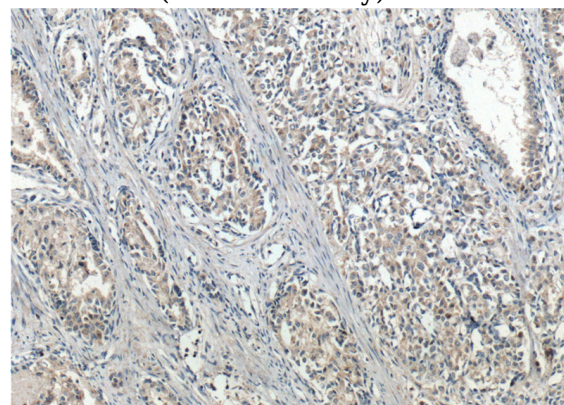
## Ig Type

Rabbit IgG

## Applications

ELISA, IHC, WB, IF

## Dilutions

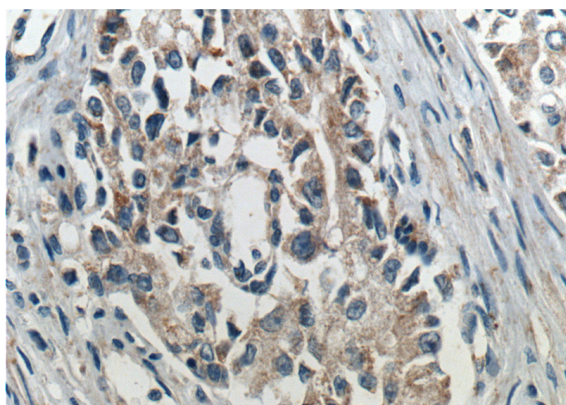


Immunohistochemistry of paraffin-embedded human prostate cancer tissue slide using Catalog No:114264(PTEN Antibody) at dilution of 1:200 (under 10x lens). heat mediated antigen retrieved with Tris-EDTA buffer(pH9).

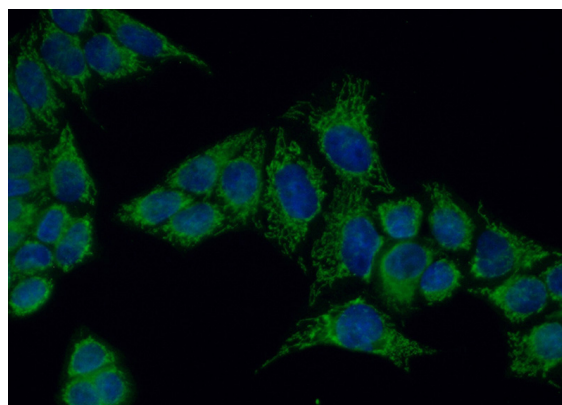
# PTEN antibody

Catalog Number: 114264

---



Immunohistochemistry of paraffin-embedded human prostate cancer tissue slide using Catalog No:114264(PTEN Antibody) at dilution of 1:200 (under 40x lens). heat mediated antigen retrieved with Tris-EDTA buffer(pH9).



Immunofluorescent analysis of (10% Formaldehyde) fixed HeLa cells using Catalog No:114264(PTEN Antibody) at dilution of 1:50 and Alexa Fluor 488-conjugated AffiniPure Goat Anti-Rabbit IgG(H+L)