

TBC1D22A antibody



Catalog Number: 115864

Product name

TBC1D22A antibody

IHC: 1:20-1:200

IF: 1:20-1:200

Specificity

Human, Mouse, Rat; other species not tested.

Antibody description

TBC1D22A Rabbit Polyclonal antibody. Positive IHC detected in human cervical cancer tissue, human cervix tissue, human kidney tissue. Positive IF detected in HeLa cells. Positive WB detected in HeLa cells, COLO 320 cells. Observed molecular weight by Western-blot: 59 kDa

Preparation

This antibody was obtained by immunization of TBC1D22A recombinant protein (Accession Number: NM_014346). Purification method: Antigen affinity purified.

Formulation

PBS with 0.02% sodium azide and 50% glycerol pH 7.3.

Storage

Store at -20°C. DO NOT ALIQUOT

Clonality

Polyclonal

Ig Type

Rabbit IgG

Applications

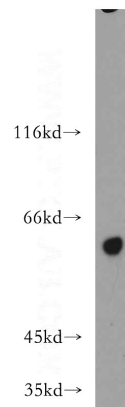
ELISA, WB, IHC, IF

Dilutions

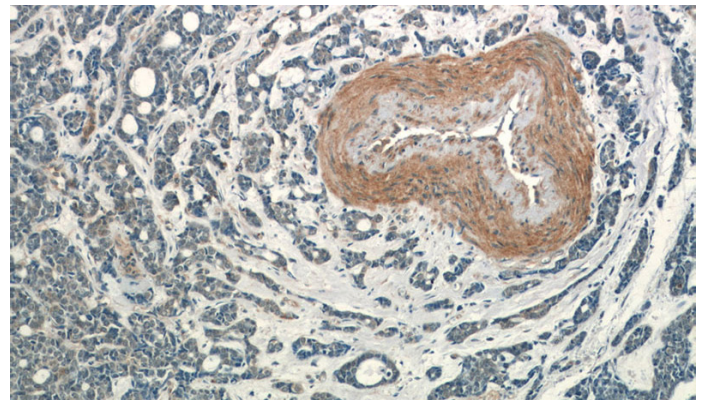
Recommended Dilution:

WB: 1:500-1:5000

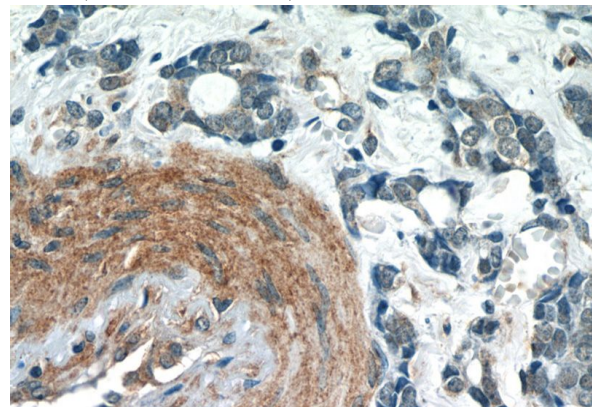
Validations



HeLa cells were subjected to SDS PAGE followed by western blot with Catalog No:115864(TBC1D22A antibody) at dilution of 1:500



Immunohistochemistry of paraffin-embedded human cervical cancer tissue slide using Catalog No:115864(TBC1D22A Antibody) at dilution of 1:50 (under 10x lens)

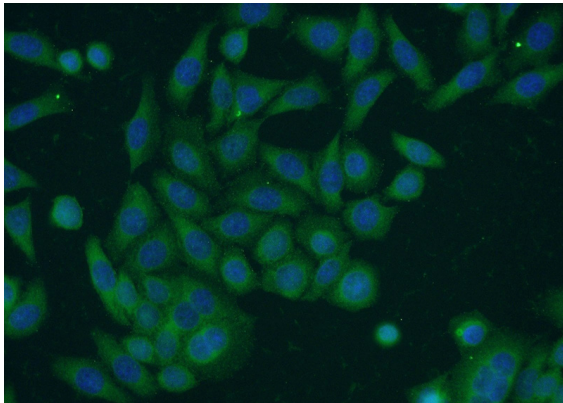


TBC1D22A antibody



Catalog Number: 115864

Immunohistochemistry of paraffin-embedded human cervical cancer tissue slide using Catalog No:115864(TBC1D22A Antibody) at dilution of 1:50 (under 40x lens)



Immunofluorescent analysis of HeLa cells using Catalog No:115864(TBC1D22A Antibody) at dilution of 1:50 and Alexa Fluor 488-conjugated AffiniPure Goat Anti-Rabbit IgG(H+L)