

Anti-ATM Rabbit antibody



Catalog Number: 166954

Product name

Anti-ATM Rabbit antibody

Specificity

Human, Mouse, Rat

Antibody description

ATM Rabbit polyclonal antibody

Preparation

Antigen: Recombinant protein of mouse ATM

Formulation

Supplied in 50nM Tris-Glycine(pH 7.4), 0.15M NaCl, 40%Glycerol, 0.01% sodium azide and 0.05% BSA.

Storage

Store at -20°C. Stable for 12 months from date of receipt.

Clonality

Polyclonal

Ig Type

Rabbit IgG

Applications

WB, ICC/IF, FC, IP

Dilutions

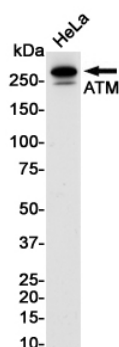
WB: 1/1000

ICC/IF: 1/50

FC: 1/50

IP: 1/20

Validations



Western blot detection of ATM in HeLa cell lysates using ATM Rabbit pAb(1:1000 diluted).Predicted band size:351KDa.Observed band size:351KDa.