

CARD11 antibody



Catalog Number: 108854

Product name

CARD11 antibody

IHC: 1:20-1:200

IF: 1:10-1:100

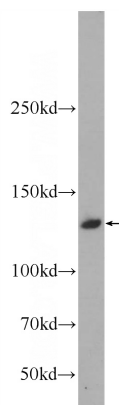
Specificity

Human, Mouse, Rat; other species not tested.

Validations

Antibody description

CARD11 Rabbit Polyclonal antibody. Positive IF detected in L02 cells. Positive IHC detected in human lymphoma tissue, human colon cancer tissue. Positive WB detected in L02 cells. Observed molecular weight by Western-blot: 133 kDa



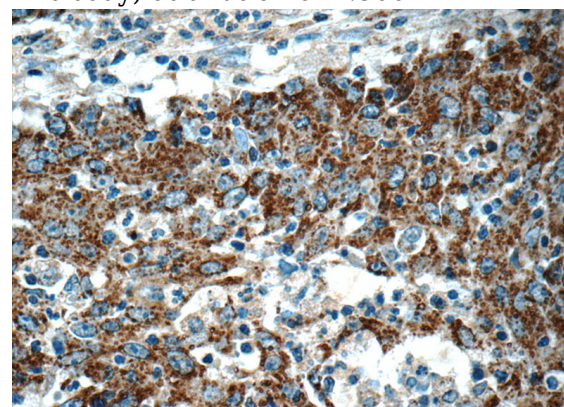
Preparation

This antibody was obtained by immunization of CARD11 recombinant protein (Accession Number: NM_001324281). Purification method: Antigen affinity purified.

L02 cells were subjected to SDS PAGE followed by western blot with Catalog No:108854(CARD11 Antibody) at dilution of 1:500

Formulation

PBS with 0.1% sodium azide and 50% glycerol pH 7.3.



Storage

Store at -20°C. DO NOT ALIQUOT

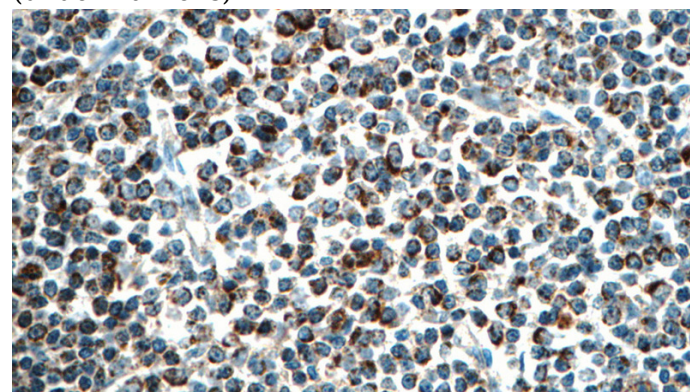
Clonality

Polyclonal

Immunohistochemistry of paraffin-embedded human colon cancer tissue slide using Catalog No:108854(CARD11 Antibody) at dilution of 1:50 (under 40x lens)

Ig Type

Rabbit IgG



Applications

ELISA, WB, IF, IHC

Dilutions

Recommended Dilution:

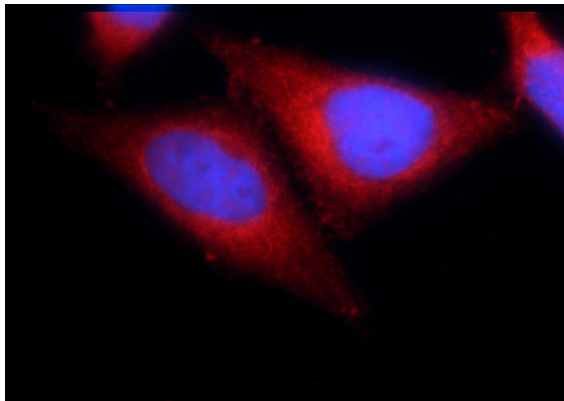
WB: 1:200-1:2000

Immunohistochemistry of paraffin-embedded

CARD11 antibody

Catalog Number: 108854

human lymphoma tissue slide using Catalog No:108854(CARD11 Antibody) at dilution of 1:50 (under 40x lens)



Immunofluorescent analysis of L02 cells using Catalog No:108854(CARD11 Antibody) at dilution of 1:25 and Rhodamine-Goat anti-Rabbit IgG