

Human BCL2 Recombinant protein (GST tag & His tag)



Catalog Number: 505744

General Information

Protein Construction

A DNA sequence encoding the XM_047437733 (1-239) aa was fused with the N-terminal GST tag and C-terminal 6His tag

Organism

Human

Expression Host

E. coli

QC Testing

Activity

Not tested.

Endotoxin

Please contact the lab for more information.

Stability

Store for up to 12 months at -20°C to -80°C as lyophilized powder.

Formulation

Protein lyophilized in sterile PBS (58 mM Na₂HPO₄, 17 mM NaH₂PO₄, 68 mM NaCl, 100 mM GSH, pH 8.0). Trehalose (5-8%) and mannitol (5-8%) protectants were added before lyophilization.

Usage Guide

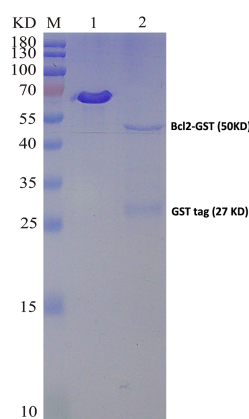
Storage

Store it under sterile conditions at -20°C to -80°C. It is recommended that the protein be aliquoted for optimal storage. Avoid repeated freeze-thaw cycles.

Reconstitution

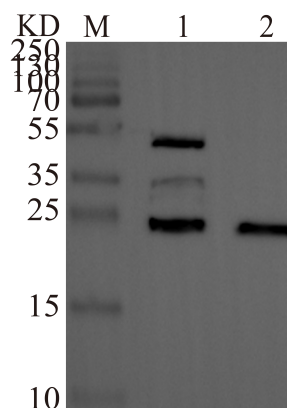
Reconstitute at 0.25 µg/µl in sterile water for short-term storage. Reconstitution with 50% glycerol solution is recommended for longer term storage (see Stability and Storage for more details). If a different concentration is needed for your purposes please adjust the reconstitution volume as required (please note: the ion concentration of the final solution will vary according to the volume used).

SDS-PAGE



SDS-PAGE result. M: Marker, Lane 1: BSA (4ug), Lane 2: BCL2-GST (2ug)

SDS-PAGE result



WB result. M: Marker, Lane 1: BCL2-GST, Lane 2: GST-tag (control)

WB result